

# Maxiflow Series

Spin-on Filters

Max. 360 l/min - 10 bar



**Designed for both  
suction and return  
application**

## Spin-on filters

The Maxiflow Series full flow filters for suction or return are designed to provide quality protection for hydraulic or lubrication systems.

Rated at a maximum pressure of 10 bar at 360 l/min, Maxiflow filters cover a wide range of mobile and industrial applications.



## Contact Information: Product Features:

Parker Hannifin  
**Hydraulic Filter Division Europe**

**European Product  
Information Centre**  
**Freephone: 00800 27 27 5374**  
(from AT, BE, CH, CZ, DE, EE, ES,  
FI, FR, IE, IT, PT, SE, SK, UK)  
**filtrationinfo@parker.com**

[www.parker.com/hfde](http://www.parker.com/hfde)

- Maxiflow full flow filters for suction or return applications.
- Available with optional indicators.
- Maximum pressure 10 bar. Maximum flow 360 l/min.
- High quality filter medium.



# Maxiflow Series

Spin-on Filters

Max. 360 l/min - 10 bar

## Features & Benefits

Features	Advantages	Benefits
High quality paint for canisters	Long term protection against corrosion	Better protection against environmental influences
Spin-on filters available for suction and return line filtration	Flexible product offering	Standardisation of components
High quality filter medium	Filter medium suitable for fatigue load due to high frequent flow fluctuation	Extended element life time

## Typical Applications

- Telescopic handlers
- Refuse vehicles
- Road sweepers
- Compactors
- Industrial power units
- Grass cutters
- Press brakes

MXA 1 Series

MXA 2 Series

MXA 3 Series

## The Parker Filtration Maxiflow Full Flow Filters for Suction or Return.

Maxiflow filters are ideally suited to full flow and bypass circuit installations where the need for high quality filter media is recommended for effective protection of system components, improving system productivity and profitability.

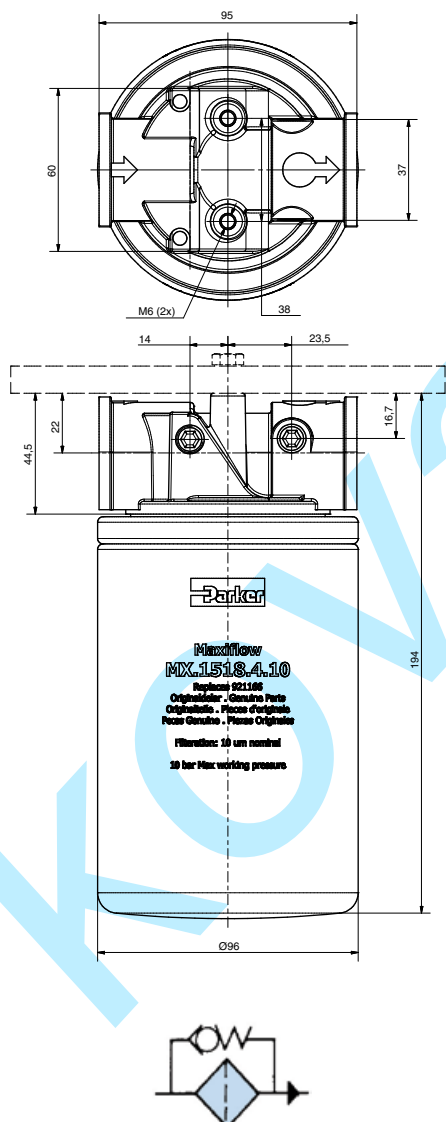
Optional indicators provide direct information as to when the spin-on canisters require replacement.

## Specification

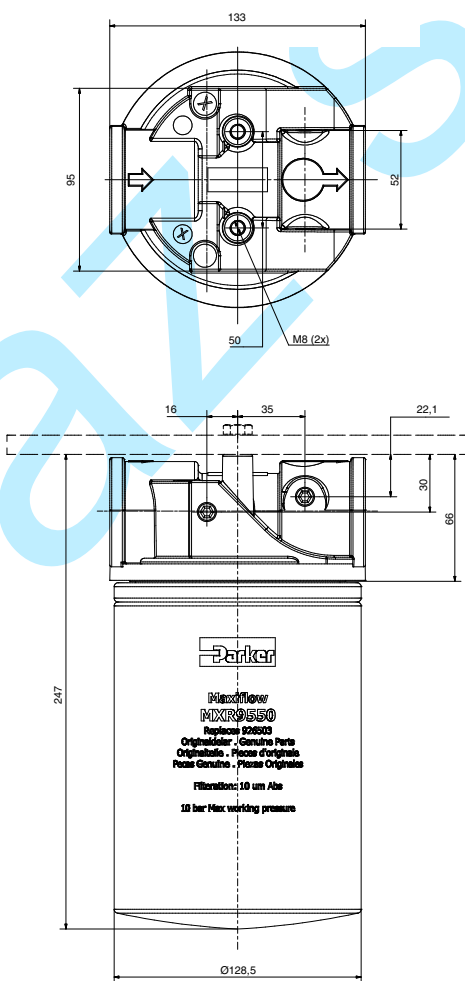
<b>Maximum working pressure:</b>	<b>MXA Series</b> 10 bar
<b>Filter head material:</b>	Aluminium alloy
<b>Filter bowl material:</b>	Steel
<b>Seal material:</b>	Nitrile
<b>Operating temperature range:</b>	-30°C to +100°C
<b>Bypass:</b>	Return line 1.7 bar Suction line 0.2 bar No bypass option
<b>Fluids:</b>	Mineral oils
<b>Element media:</b>	Microglass III media Cellulose media

## Installation Details

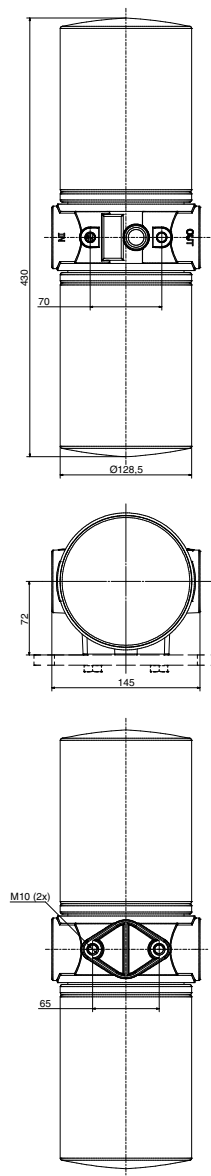
### MXA 1 Series



### MXA 2 Series



### MXA 3 Series



# Maxiflow Series

## Pressure Drop Curves

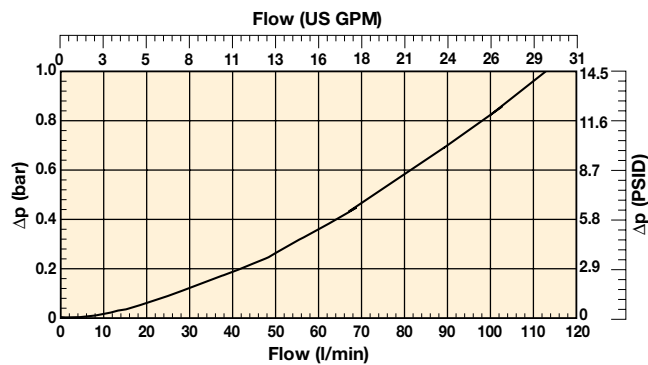
The recommended level of the initial pressure drop for low pressure filters is max 0.5 bar.

If the medium used has a viscosity different from 30cSt, pressure drop over the filter can be estimated as follows:

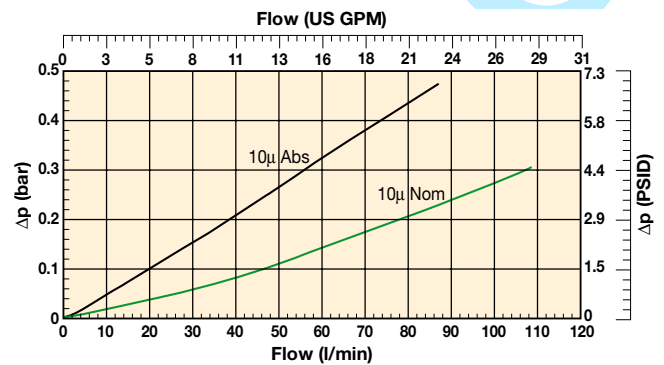
$$\Delta p = (\Delta p_{30} \times \text{viscosity of medium used}) / 30\text{cSt}.$$

### Maxiflow MXA 1 Series

#### Filter Housing

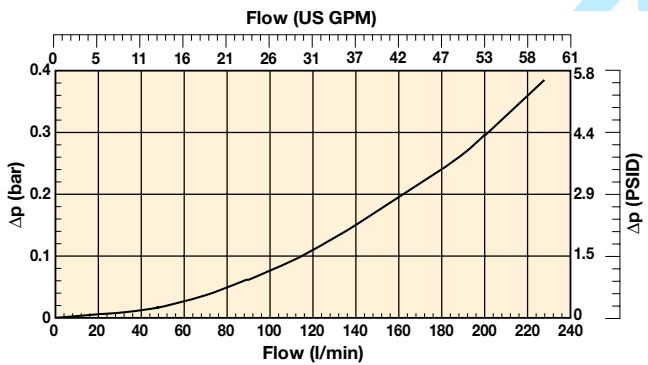


#### Filter Element

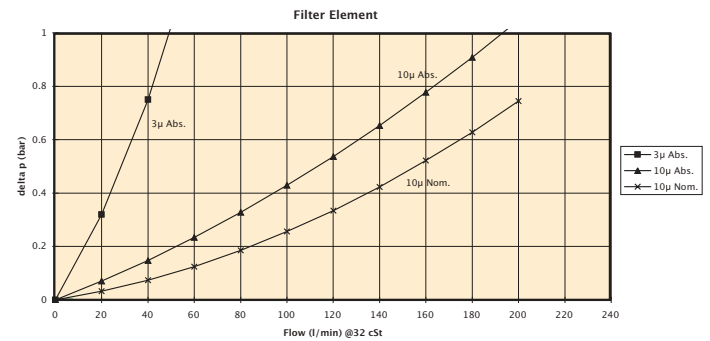


### Maxiflow MXA 2 Series

#### Filter Housing

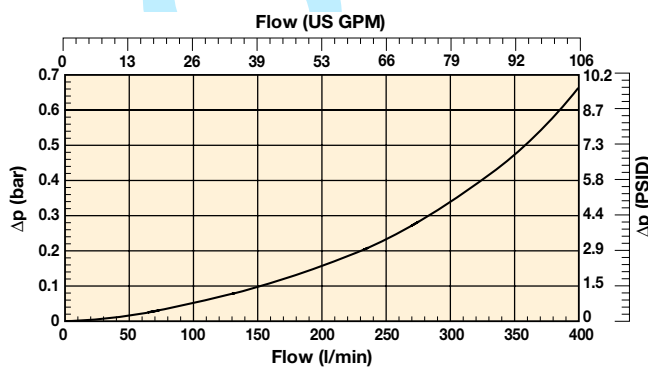


#### Filter Element

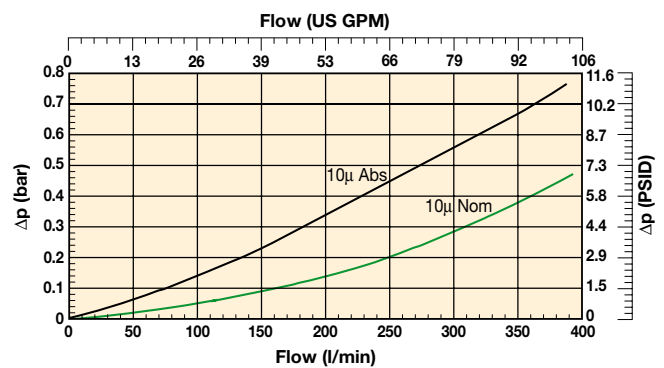


### Maxiflow MXA 3 Series

#### Filter Housing



#### Filter Element

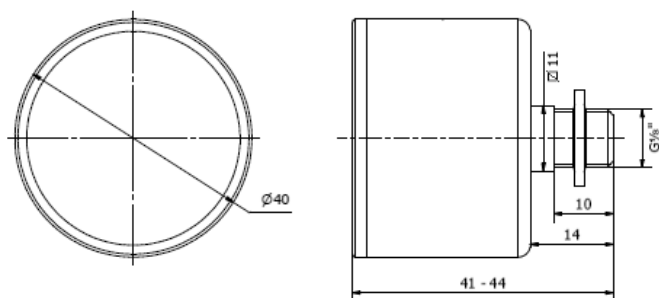


Note: All above data is calculated at 30cSt Rel density 0.856.

## Indicator Specifications

### Option

Visual Pressure Indicator  
Code G2

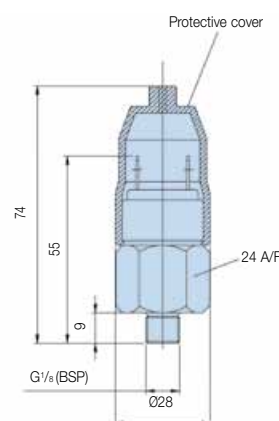


#### Visual indicator

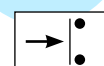
Thread connection	G1/8
Code	FMUG2EBPG02L

### Option

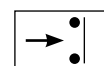
Indicator PS NO/NC Pressure Switch  
Code S2/S3



Normally open contacts



Normally closed contacts



#### Specifications

Elec. rating	42V / 2A
Thread connection	G1/8
Elec. connection	AMP terminal 6.3x0.8
Protection	IP65 (terminal IP00)
Switch type	NO or NC
Code	FMUS2EBMG02L (NO switch)
	FMUS3EBMG02L (NC switch)

## Ordering Information

### Box 1

Housing type	Code
MXA1	<b>MXA1</b>
MXA2	<b>MXA2</b>
MXA3 Double element version	<b>MXA3</b>

### Box 2

Element Length	Dimensions	Thread Spin-on can	Code
Short (MXA 1 only)	D=97.0 L=58.5	G3/4"	On request
Size 1 (MXA 1 only)	D=97.0 L=145	G3/4"	<b>2</b>
Size 2 (Not for MXA1)	D=128.0 L=180	G1 1/4"	<b>3</b>
Ext'd Size 2 (Not for MXA1)	D=128.0 L=226	G1 1/4"	On request

### Box 3

Filter Media	Code
10 micron Microglass III Abs.	<b>10Q</b>
10 micron (nom) Cellulose	<b>10C</b>
3 micron Abs. (MXA2 + 3 only)	<b>03Q</b>

### Box 4

Seal Material	Code
Nitrile	<b>B</b>

### Box 5

Indicator	Code
Plugged port	<b>P</b>
Pressure Switch 42V, 1.2 bar setting, NO	<b>S2</b>
Pressure Switch 42V, 1.2 bar setting, NC	<b>S3</b>
Pressure Gauge, setting 1.2 bar	<b>G2</b>

### Box 6

Bypass Valve	Code
1.7 bar	<b>G</b>
Blocked Bypass	<b>X</b>
0.2 bar Suction	On request

### Box 7

Ports	Code
G3/4" (MXA1 only)	<b>G12</b>
G1 1/4" (MXA2 only)	<b>G20</b>
G1 1/2" (MXA3 only)	<b>G24</b>

### Box 8

Housing type	Code
Standard	<b>1</b>