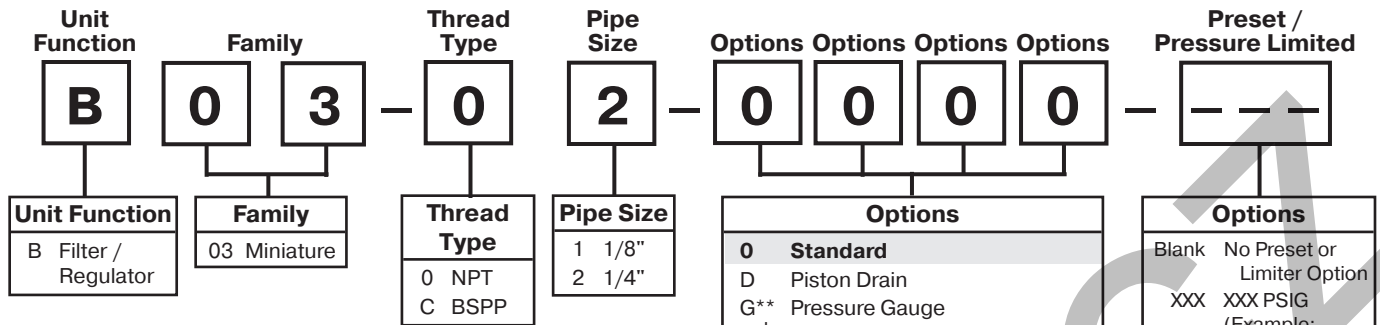


Filter / Regulator Numbering System

 = "Most Popular"



Note: When selecting from the options columns, please enter letters in alphabetical order for positions 6, 7, 8 and 9.

For example: **B 0 3 - 0 1 - D M 0 0**

NOTE: 0000 in position 6, 7, 8 and 9 signifies standard product.
(Poly Bowl, Manual Drain, 2 to 125 PSIG, Relieving)

Spring Type by Preset / Limited Pressure:

For Preset / Limited Pressure 10 to 25 use 30 PSI Spring
For Preset / Limited Pressure 26 to 50 use 60 PSI Spring
For Preset / Limited Pressure 51 to 90 use 125 PSI Spring

Options	
0	Standard
D	Piston Drain
G**	Pressure Gauge
J*†	Preset, Adjustable
K*†	Preset, Non-Adj. / Epoxy
L	1 to 60 PSI, Relieving
M*	Metal Bowl
N	2 to 125 PSI, Non-Relieving
P	1 to 30 PSI, Relieving
Q	1 to 15 PSI, Relieving
R*†	Pressure Limiter
S	1 to 60 PSI, Non-Relieving
T	1 to 30 PSI, Non-Relieving
U	1 to 15 PSI, Non-Relieving

* Inlet pressure is 100 PSIG.

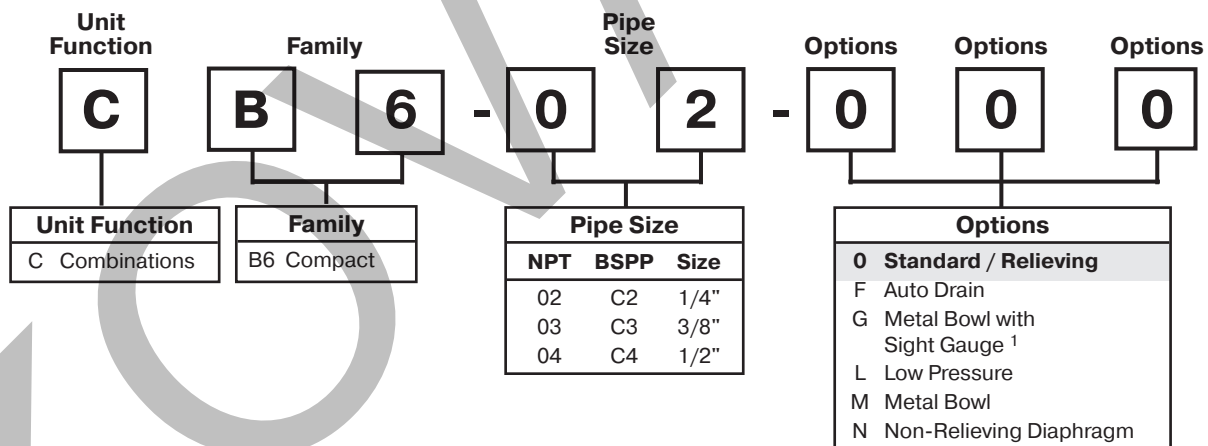
For other pressures, consult factory.

** Not available with BSPP thread type.

† Must specify preset or limited pressure.

Options	
Blank	No Preset or Limiter Option
XXX	XXX PSIG (Example: 065 = 65 PSIG)

Note: Pressure Range
10 to 90 PSIG in 5 PSIG
Increments



Pipe Size		
NPT	BSPP	Size
02	C2	1/4"
03	C3	3/8"
04	C4	1/2"

Options	
0	Standard / Relieving
F	Auto Drain
G	Metal Bowl with Sight Gauge ¹
L	Low Pressure
M	Metal Bowl
N	Non-Relieving Diaphragm

¹ For miniature family units, G option is a pressure gauge.
For compact, G option is a metal bowl with sight gauge.

"F" Series Filters, Type "A" 5 micron elements:

All Wilkerson Type "A" 5 micron elements **meet or exceed ISO Class 3** for maximum particle size and concentration of solid contaminants.

NOTE: All classes above refer to International Standards Organization (ISO) standard 8573-1, pertaining to maximum particle size and concentration of solid contaminants, and maximum oil content.

Note: When selecting from the options columns, please enter letters in alphabetical order for positions 6, 7, and 8.
For example:

CB6-02-0 0 0

Note: 000 in positions 6, 7 and 8 signifies standard product.

Filter / Regulator Numbering System

= "Most Popular"

Unit Function

B

Unit Function

B Filter / Regulator

Family

B

Family

B3 Brass Miniature
A3 Aluminum Miniature

Thread Type

0

Thread Type

0 NPT
C BSPP ¹

Pipe Size

2

Pipe Size

1 1/8"
2 1/4"

Diaphragm Function

F

Diaphragm Function

Relieving
Non-relieving ¹

Bowls / Drains

K

Bowls / Drains

Manual Drain
Piston Drain

Options

G

Options

0 None
G Pressure Gauge
R Remote Air Piloted
T Tamper Resistant Regulator Adj
Z Brass Bonnet and Hex Adjustment Knob

Options

0

Options

0 None
G Pressure Gauge
R Remote Air Piloted
T Tamper Resistant Regulator Adj
Z Brass Bonnet and Hex Adjustment Knob

Diaphragm Function	Fluorocarbon	Spring Range		
		1 to 25 PSIG (0.07 to 1.7 bar)	1 to 60 PSIG (0.07 to 4.1 bar)	2 to 125 PSIG (0.14 to 8.6 bar)
Relieving	No	C	D	F
	Yes	J	K	L
Non-relieving ¹	No	P	W	R
	Yes	V	X	Y

	Bowls	
Drains	Plastic	Metal
Manual Drain	K	L
Piston Drain	R	S

NOTE: Standard pressure adjustment is plastic "snap lock" knob and plastic bonnet with plastic panel mount nut.

¹ ISO, R228 (G Series)

Type "A" 5 micron elements: All Wilkerson Type "A" 5 micron elements **meet or exceed** ISO Class 3 for maximum particle size and concentration of solid contaminants.

NOTE: All classes above refer to International Standards Organization (ISO) standard 8573-1, pertaining to maximum particle size and concentration of solid contaminants, and maximum oil content.

Note: When selecting from the options columns, please enter letters in alphabetical order for positions 8 and 9. For example:

BB3-02-F K G T

Series

B90

Filter / Regulator Combination

B90

Thread type*

0

NPT 0
BSPP C

Port size

6

3/4 6
1 8

Function / pressure range

A

Relieving / 0 to 174 PSI
Relieving / 0 to 232 PSI

Bowl / drain type

H

Metal bowl / sight gauge & auto drain
Metal bowl / sight gauge / manual & semi auto drain

Option

0

None
Pressure Gauge
Lockable type

Notes:

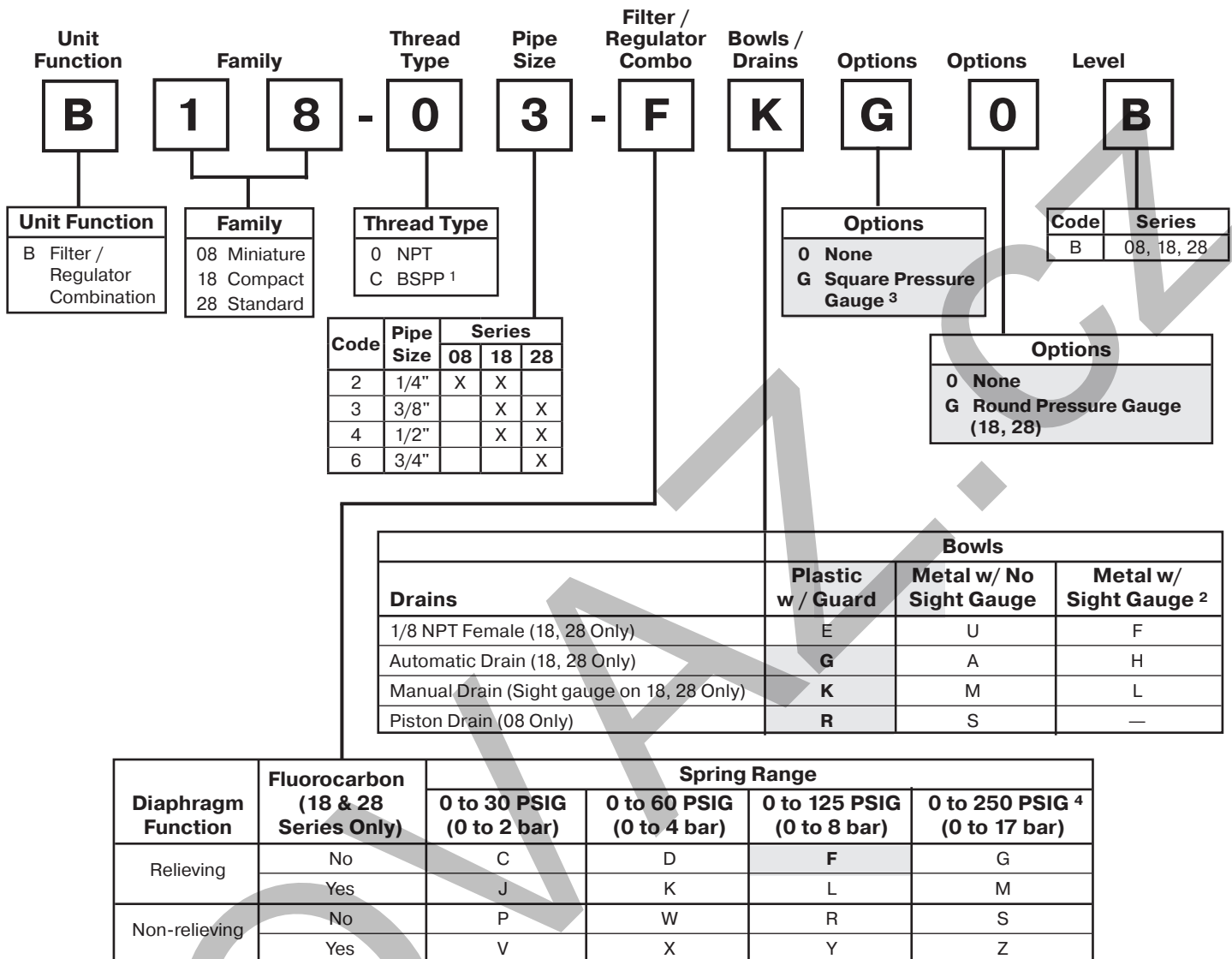
* For 1-1/2" ported unit, please order P3YKA*BCP port block kit separately.

† Not field convertible.

Bold items are most common.

Filter / Regulator Numbering System

 = "Most Popular"



¹ ISO, R228 (G Series)

² B08 Filter / Regulator has an all metal bowl (no sight gauge)

³ Square gauge included with B08

⁴ B08 series operating range 0 to 232 PSIG (1 to 16 bar)

NOTE: When selecting from the options columns, please enter letters in alphabetical order, for positions 7, 8, 9. For example:

B 18-03-F K 0 0 B

"F" Series Filters, Type "A" 5 micron elements: All Wilkerson Type "A" 5 micron elements **meet or exceed** ISO Class 3 for maximum particle size and concentration of solid contaminants.

NOTE: All classes above refer to International Standards Organization (ISO) standard 8573-1, pertaining to maximum particle size and concentration of solid contaminants, and maximum oil content.

Filter / Regulator

B03

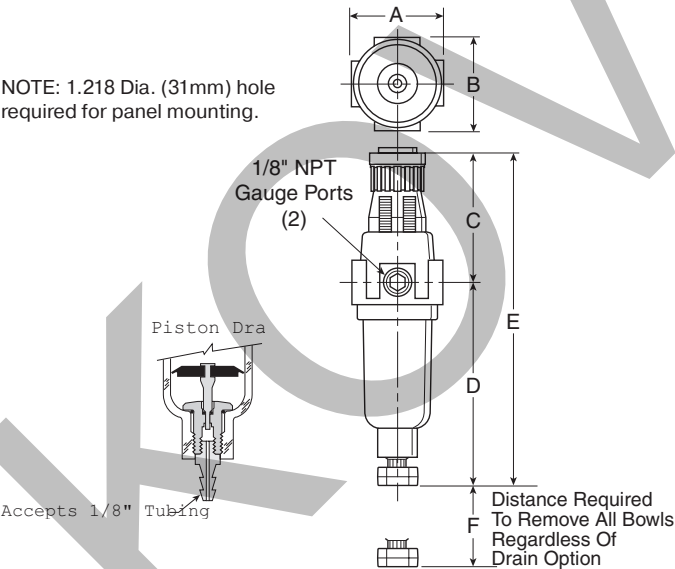
 = "Most Popular"

B03-02-0000

Features

- Excellent Water Removal Efficiency
- Unbalanced Poppet Standard
- Solid Control Piston for Extended Life
- Space Saving Package offers both Filter and Regulator features in One Integral Unit
- Non-rising Adjustment Knob
- Two Full Flow 1/8" Gauge Ports

NOTE: 1.218 Dia. (31mm) hole required for panel mounting.



Dimensions

Model	Inches (mm)	A	B	C	D	D†	E	E†	F
Standard Unit B03-XX-XXXX		1.62 (41)	1.58 (40)	2.42 (61)	3.79 (96)	3.64 (92)	6.21 (158)	6.06 (154)	1.60 (41)

† With Piston Drain

Specifications

Flow Capacity*	1/8	16 SCFM (7.5 dm ³ /s)
	1/4	18 SCFM (8.5 dm ³ /s)
Gauge Ports (2)	1/8 Inch	
Port Threads	1/8, 1/4 Inch	
Pressure & Temperature Ratings –		
Plastic Bowl	0 to 150 PSIG (0 to 10.3 bar) 32°F to 125°F (0°C to 52°C)	
Metal Bowl	0 to 250 PSIG (0 to 17.2 bar) 32°F to 175°F (0°C to 80°C)	
Secondary Pressure Ranges –		
Standard Pressure	2 to 125 PSIG (0 to 8.6 bar)	
Medium Pressure	1 to 60 PSIG (0 to 4.1 bar)	
Medium Pressure	1 to 30 PSIG (0 to 2.1 bar)	
Low Pressure	1 to 15 PSIG (0 to 1.0 bar)	
Weight	.4 lb. (.18 kg)	

* Inlet pressure 100 PSIG (6.9 bar). Secondary pressure 90 PSIG (6.2 bar). and 10 PSIG pressure drop.

Materials of Construction

Adjusting Nut	Brass
Adjusting Stem & Spring	Steel
Body	Zinc
Bonnet, Knob, Seat, Piston, Holder & Deflector	Plastic
Bowls – Transparent	Polycarbonate
Metal (Without Sight Gauge)	Zinc
Filter Elements – 5 Micron (Standard)	Plastic
Manual Drain –	
Body & Stem	Plastic
Seals	Nitrile
Piston Drain –	
Piston & Seals	Nitrile
Stem, Seat, Adaptor & Washers	Aluminum
Seals	Nitrile

 = "Most Popular"

Replacement Kits

Filter Element Kit, 5 MicronPS403

Metal Bowl –

Piston DrainPS451B

Manual DrainPS447B

Poly Bowl –

Piston DrainPS408B

Manual DrainPS404

Poppet / Piston Kits –

Unbalanced, Non-RelievingPS428P

Unbalanced, RelievingPS426P

Accessories

Gauge, Pressure –

30 PSIG (0 to 2.1 bar).....K4515N18030

60 PSIG (0 to 4.1 bar).....K4515N18060

160 PSIG (0 to 11.0 bar) K4515N18160

Mounting Bracket Kit* (Includes Panel Mount Nut) PS417B

Panel Mount Nut* –

Plastic P78652

MetalP01531

Springs –

1 to 15 PSIG RangeP01176

1 to 30 PSIG RangeP01175

1 to 60 PSIG RangeP01174

2 to 125 PSIG Range.....P01173

*Tighten panel mount nut 2.8 to 3.4 Nm (25 to 30 in-lbs) of torque.

WARNING

**Product rupture can cause serious injury.
Do not connect regulator to bottled gas.
Do not exceed maximum primary pressure rating.**

CAUTION:

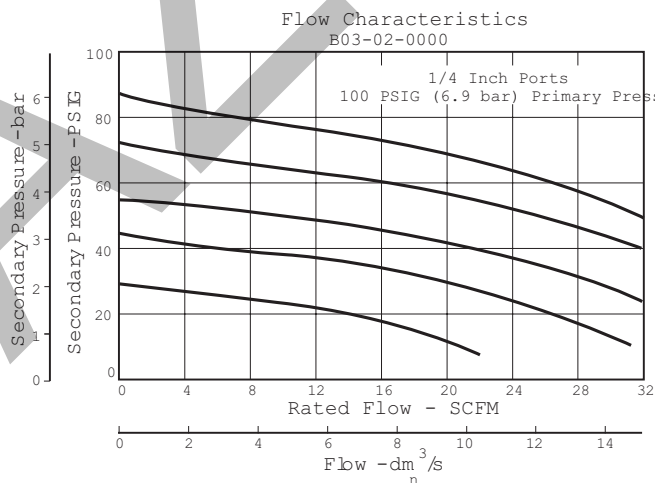
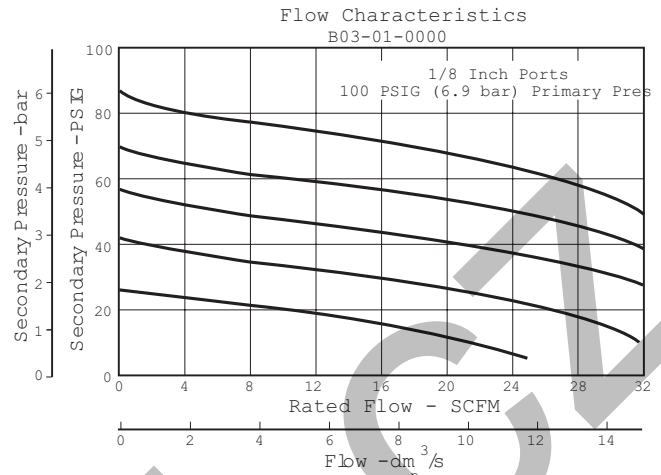
REGULATOR PRESSURE ADJUSTMENT – The working range of knob adjustment is designed to permit outlet pressures within their full range. Pressure adjustment beyond this range is also possible because the knob is not a limiting device. This is a common characteristic of most industrial regulators, and limiting devices may be obtained only by special design.

For best performance, regulated pressure should always be set by increasing the pressure up to the desired setting.

Ordering Information

Model Type	Port Size	Plastic Bowl	Metal Bowl
Manual Drain	1/8	B03-01-0000	B03-01-M000
	1/4	B03-02-0000	B03-02-M000

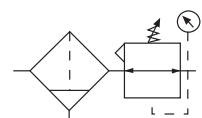
Options - To order an option supplied with the unit model, add the appropriate coded suffix letter in the designated position of the model number.



Miniature Filter / Regulator

BB3 – Brass

BA3 – Aluminum

 = "Most Popular"
**BB3-02-FK00**

Features

- Brass Construction Handles Most Corrosive Environments
- Large Diaphragm to Valve Area Ratio for Precise Regulation and High Flow Capacity
- Plastic Bowl or Black Painted Zinc Metal Bowl
- High Flow: 1/4" -16 SCFM
- Fluorocarbon Seals Optional

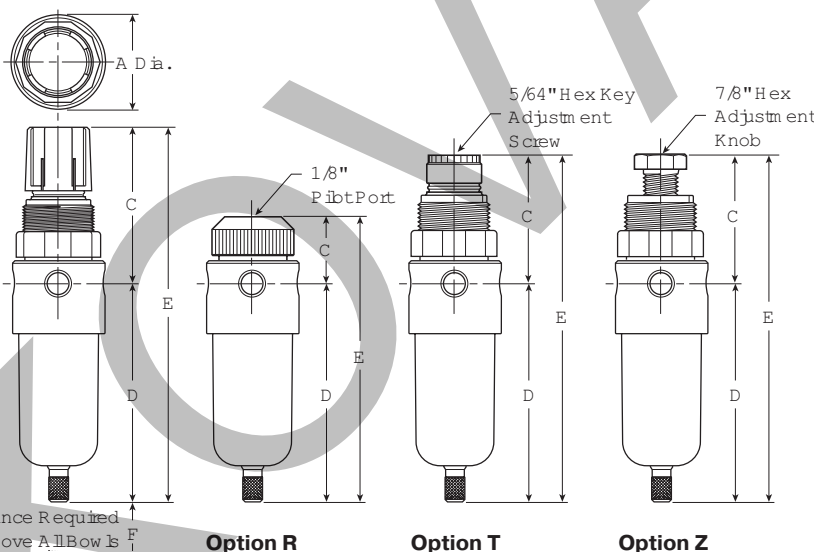
Specifications

Flow Capacity*	1/4	16 SCFM (7.6 dm ³ /s)
Maximum Supply Pressure		
Polycarbonate Bowl		150 PSIG (10.37 bar)
Metal Bowl		300 PSIG (20.7 bar)
Operating Temperature	40°F to 125°F (4.4°C to 52°C)	
Port Size	NPT / BSPP-G	1/8, 1/4
Standard Filtration		5 Micron
Weight		0.8 lb. (0.36 kg)

* Inlet pressure 100 PSIG (6.9 bar). Secondary pressure 75 PSIG (5.2 bar).

Materials of Construction

Body	Brass	
Bowls	Polycarbonate or Zinc - Painted Black	
Manual Drain	Brass	
Diaphragm and Seals	Nitrile	
Element Holder / Deflector / Bonnet	Acetal	
Filter Elements	Type A	Polyethylene
Knob	Acetal	
Springs	Plated Steel	
Valve Assembly and Bottom Plug	Brass	



Dimensions

NOTES: Panel Nut included, but not shown on dimensional drawing.
1.19" dia. (30.2) mm hole required for panel mounting.

Model	Inches (mm)	A	C	C			D	E	E			F
				Option R	Option T	Option Z			Option R	Option T	Option Z	
Standard Unit - Brass Body BB3-02-XXXX		1.56 (40)	2.63 (67)	1.09 (27.7)	2.04 (51.8)	2.08 (52.8)	3.63 (92)	6.25 (159)	4.72 (119.9)	5.67 (144.0)	5.71 (145.0)	1.58 (40)
Standard Unit - Aluminum Body BA3-02-XXXX		1.56 (40)	2.63 (67)	1.09 (27.7)	2.04 (51.8)	2.08 (52.8)	3.63 (92)	6.25 (159)	4.72 (119.9)	5.67 (144.0)	5.71 (145.0)	1.58 (40)

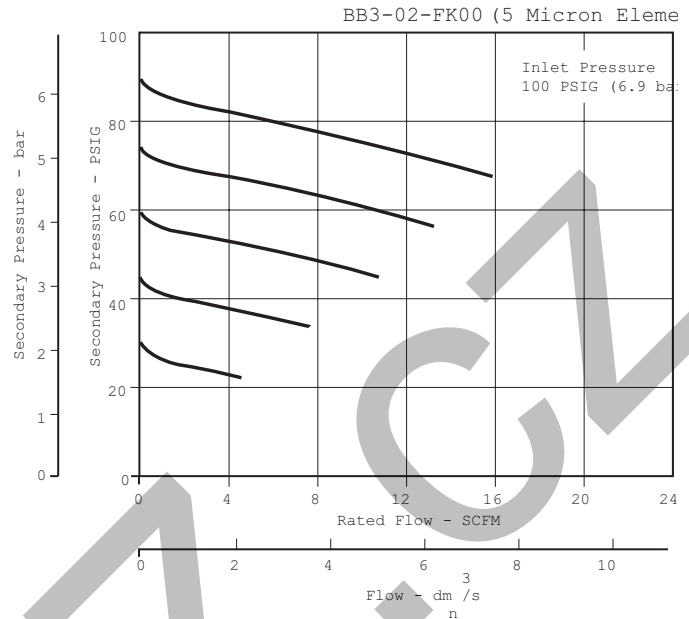
 = "Most Popular"

Replacement Element and Repair Kits

5 Micron Element	FRP-96-806
Bonnet, Knob, Adjusting Screw Kit	RRP-96-821
Bonnet, Tamper Resistant Adjustment Kit	RRP-96-822
Diaphragm and Valve Repair Kit –	
Relieving	RRP-96-819
Non-Relieving	RRP-96-820
Plastic Bowl –	
No Guard, Manual Twist Drain	GRP-96-808
No Guard, Piston Drain	GRP-96-809
Metal Bowl –	
Manual Twist Drain	GRP-96-810
Piston Drain	GRP-96-811

Accessories

Gauge, Pressure –	
0 to 60 PSI (0 to 4.1 bar), 1-1/2" Dial Face,	
1/8" NPT	K4515N18060
0 to 160 PSI (0 to 11.0 bar), 1-1/2" Dial Face,	
1/8" NPT, CBM	K4515N18160
Manual Drain	GRP-96-812
Piston Type Drain	GRP-96-813
Panel Mount Nut –	
Aluminum	RPA-96-733
Plastic	RPA-96-734
Wall Mounting Bracket –	
L-Type	GRP-95-147
L-Type with Plastic Panel Mount Nut	GRP-95-747



WARNING

**Product rupture can cause serious injury.
Do not connect regulator to bottled gas.
Do not exceed maximum primary pressure rating.**

CAUTION:

REGULATOR PRESSURE ADJUSTMENT – The working range of knob adjustment is designed to permit outlet pressures within their full range. Pressure adjustment beyond this range is also possible because the knob is not a limiting device. This is a common characteristic of most industrial regulators, and limiting devices may be obtained only by special design.

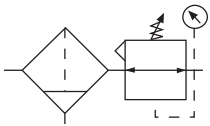
For best performance, regulated pressure should always be set by increasing the pressure up to the desired setting.

Ordering Information

Model Type	Port Size	Relieving 2 to 125 PSI (0.14 to 8.6 bar) No Bowl Guard	Relieving 1 to 60 PSI (0.07 to 4.1 bar) No Bowl Guard	Relieving 1 to 25 PSI (0.07 to 1.7 bar) No Bowl Guard	Relieving 2 to 125 PSI (0.14 to 8.6 bar) Metal Bowl	Relieving 1 to 60 PSI (0.07 to 4.1 bar) Metal Bowl	Relieving 1 to 25 PSI (0.07 to 1.7 bar) Metal Bowl
Manual Drain	1/8"	BB3-01-FK00	BB3-01-DK00	BB3-01-CK00	BB3-01-FL00	BB3-01-DL00	BB3-01-CL00
	1/4"	BB3-02-FK00	BB3-02-DK00	BB3-02-CK00	BB3-02-FL00	BB3-02-DL00	BB3-02-CL00
Piston Drain	1/8"	BB3-01-FR00	BB3-01-DR00	BB3-01-CR00	BB3-01-FS00	BB3-01-DS00	BB3-01-CS00
	1/4"	BB3-02-FR00	BB3-02-DR00	BB3-02-CR00	BB3-02-FS00	BB3-02-DS00	BB3-02-CS00
Manual Drain	1/8"	BA3-01-FK00	BA3-01-DK00	BA3-01-CK00	BA3-01-FL00	BA3-01-DL00	BA3-01-CL00
	1/4"	BA3-02-FK00	BA3-02-DK00	BA3-02-CK00	BA3-02-FL00	BA3-02-DL00	BA3-02-CL00
Piston Drain	1/8"	BA3-01-FR00	BA3-01-DR00	BA3-01-CR00	BA3-01-FS00	BA3-01-DS00	BA3-01-CS00
	1/4"	BA3-02-FR00	BA3-02-DR00	BA3-02-CR00	BA3-02-FS00	BA3-02-DS00	BA3-02-CS00

Options - To order an option supplied with the unit model, add the appropriate coded suffix letter in the designated position of the model number.

Filter / Regulator B08



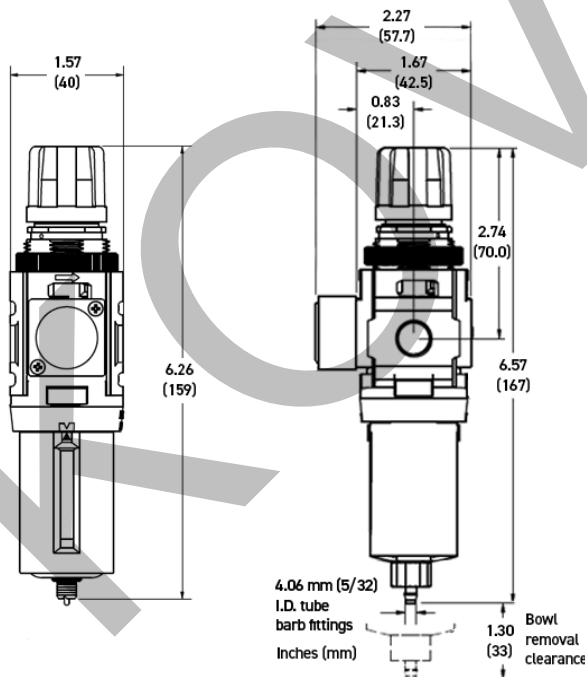
Features

- Space-Saving Integral Filter / Regulator Design
- Unique Flush-mounted Pressure Gauge Available
- Balanced Valve Design
- Modern Design and Appearance
- Light Weight
- High Flow Capacities
- Quick-Disconnect Bowl / Bowl Guard



WARNING

**Product rupture can cause serious injury.
Do not connect regulator to bottled gas.
Do not exceed maximum primary pressure rating.**



Automatic Piston
Drain

Manual Drain

Inches (mm)

Specifications

Flow Capacity*	1/4	73 SCFM (35 dm ³ /s, ANR)
Adjusting Range		0 to 30 PSIG (0 to 2 bar)
Pressure		0 to 60 PSIG (0 to 4 bar)
		0 to 125 PSIG (0 to 8 bar)
		0 to 232 PSIG (0 to 16 bar)
Gauge Ports (2)**	NPT	1/8
Maximum Supply Pressure	Plastic Bowl	150 PSIG (10.3 bar)
	Metal Bowl	250 PSIG (17.2 bar)
Operating Temperature†	Plastic Bowl	14° to 125°F (-10° to 52°C)
	Metal Bowl	14° to 150°F (-10° to 65.5°C)
Port Size	NPT / BSPP-G	1/4
Bowl Capacity		0.4 oz
Standard Filtration		5 Micron
Weight		0.42 lb. (0.19 kg)

* Inlet pressure 145 psig (10 bar). Secondary pressure 100 psig (6.9 bar) and 14.5 psig (1 bar) pressure drop.

† Units with square gauges: 5°F to 150°F (-15°C to 65.5°C)

"F" Series Filters, Type "A" 5 micron elements: All Wilkerson Type "A" 5 micron elements **meet or exceed ISO Class 3** for maximum particle size and concentration of solid contaminants.

Air quality: Within ISO 8573-1: 1991 Class 3 (Particulates)
Within ISO 8573-1: 2001 Class 6 (Particulates)

Gauge supplied with every part. Gauge can be installed on the front or back of the regulator. If no gauge is installed, both seal screws must be installed.

Materials of Construction

Adjustment Knob	Acetal	
Body	Aluminum	
Bottom Cap	Glass-filled Nylon	
Bonnet	Glass-filled Nylon	
Bowl	Plastic Bowl	Polycarbonate
	Metal Bowl	Aluminum
Bowl Guard	Nylon	
Diaphragm Assembly	Stainless Steel / Nitrile	
Filter Element	Polyethylene	
Panel Nut	Acetal	
Seals	Plastic Bowl	Nitrile
	Metal Bowl	Nitrile
Springs	Steel	
Valve Assembly	Acetal / Nitrile	

CAUTION:

REGULATOR PRESSURE ADJUSTMENT – The working range of knob adjustment is designed to permit outlet pressures within their full range. Pressure adjustment beyond this range is also possible because the knob is not a limiting device. This is a common characteristic of most industrial regulators, and limiting devices may be obtained only by special design.

For best performance, regulated pressure should always be set by increasing the pressure up to the desired setting.

Accessories

Automatic Piston Drain..... GRP-96-716

Panel Mount Nut –

AluminumRPA-96-773

PlasticRPA-96-734

Pressure Gauge– (*see note below)

Square flush mount gauge

0-4 bar..... GRP-96-791-04B

0-11 bar.....GRP-96-792-11B

0-20 bar..... GRP-96-792-20B

0-60 PSIG..... GRP-96-791-060

0-160 PSIG.....GRP-96-791-160

0-290 PSIG..... GRP-96-791-290

*For B08 Filter Regulators with date code after November 2023 (4423 Date Code), please use these part numbers when ordering a replacement gauge.

Square flush mount gauge

0-4 bar.....K4511SCR04B

0-11 bar.....K4511SCR11B

0-60 PSIG..... K4511SCR060

0-160 PSIG..... K4511SCR160

Square with adapter kit

0-4 bar.....P6G-PR10040

0-11 bar.....P6G-PR10110

0-60 PSIG.....P6G-PR90060

0-160 PSIG.....P6G-PR90160

50mm (2") round 1/4" center back mount

0-30 PSIG / 0-2 bar..... K4520N14030

0-60 PSIG / 0-4 bar..... K4520N14060

0-160 PSIG / 0-11 bar..... K4520N14160

0-300 PSIG / 0-20 bar..... K4520N14300

1-3/4" Digital Round 1/4" NPT

0 to 160 PSIG K4517N14160D

Tamperproof Lock and Cover Kit

(lock not included)..... RPA-96-736B

Wall Mounting Bracket –

C-Type.....GPA-97-010

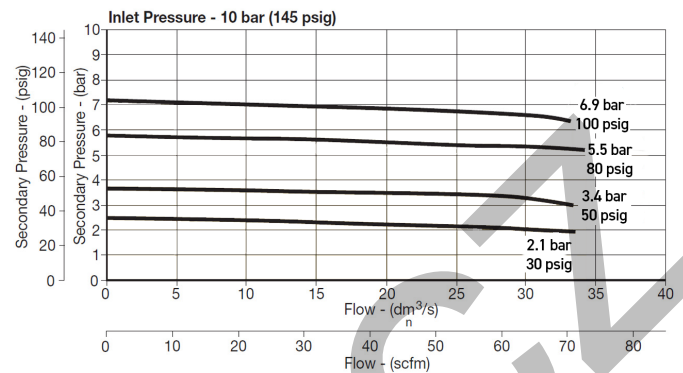
L-Type..... GPA-96-739

T-Type..... GPA-96-737

Ordering Information

Model Type	Port Size	Plastic Bowl / Bowl Guard / Manual Drain / With Gauge 0 to 125 PSIG (0 to 8.6 bar)	Plastic Bowl / Bowl Guard / Manual Drain / With Gauge 0 to 30 PSIG (0 to 2.0 bar)	Plastic Bowl / Bowl Guard / Automatic Piston / With Gauge 0 to 125 PSIG (0 to 8.6 bar)
Relieving	1/4	B08-02-FKG0B	B08-02-CKG0B	B08-02-FRG0B
Non-relieving	1/4	B08-02-RKG0B	B08-02-PKG0B	B08-02-RRG0B

Options - To order an option supplied with the unit model, add the appropriate coded suffix letter in the designated position of the model number.

 = "Most Popular"


Replacement Bowl Kits

Metal Bowl, Manual Drain GRP-96-714

Plastic Bowl / Bowl Guard, Manual Drain..... GRP-96-712

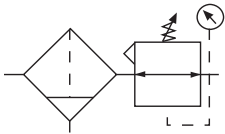
Replacement Element Kit

Type "A", 5 Micron.....FRP-96-729

Replacement Kits

Adjusting Knob..... GRP-96-792

Filter / Regulator B18



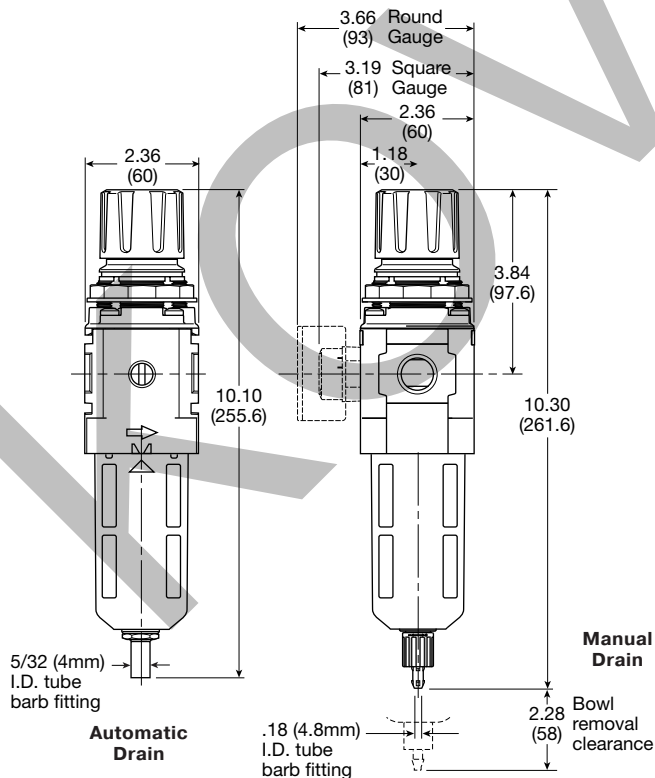
Features

- 5 Micron Filtration
- Balanced Valve Design
- Spring Loaded Diaphragm
- 1/2" NPT / BSPP-G Over-Ported
- Quick-Disconnect Bowl / Bowl Guard
- Light Weight
- High Flow Capacities



WARNING

**Product rupture can cause serious injury.
Do not connect regulator to bottled gas.
Do not exceed maximum primary pressure rating.**



Specifications

Flow Capacity*	1/4	148 SCFM (70 dm ³ /s, ANR)
	3/8	158 SCFM (75 dm ³ /s, ANR)
	1/2	164 SCFM (77 dm ³ /s, ANR)
Adjusting Range Pressure		0 to 30 PSIG (0 to 2 bar)
		0 to 60 PSIG (0 to 4 bar)
		0 to 125 PSIG (0 to 8 bar)
		0 to 250 PSIG (0 to 17 bar)
Gauge Port (2)	NPT / BSPP-G	1/4
Maximum Supply Pressure	Plastic Bowl	150 PSIG (10.3 bar)
	Metal Bowl	250 PSIG (17.2 bar)
Operating Temperature	Plastic Bowl	-13° to 125°F (-25° to 52°C)
	Metal Bowl	-13° to 150°F (-25° to 65.5°C)
Port Size	NPT / BSPP-G	1/4, 3/8, 1/2
Bowl Capacity		1.72 oz
Standard Filtration		5 Micron
Weight		1.17 lb. (0.53 kg)

* Inlet pressure 145 psig (10 bar). Secondary pressure 91.3 psig (6.3 bar) and 14.5 psig (1 bar) pressure drop.

"F" Series Filters, Type "A" 5 micron elements: All Wilkerson Type "A" 5 micron elements **meet or exceed ISO Class 3** for maximum particle size and concentration of solid contaminants.

Air quality: Within ISO 8573-1: 1991 Class 3 (Particulates)
Within ISO 8573-1: 2001 Class 6 (Particulates)

Materials of Construction

Adjustment Knob	Acetal	
Body	Aluminum	
Body Cap	ABS	
Bowl	Plastic Bowl	Polycarbonate
	Metal Bowl	Aluminum
Bowl Guard	Nylon	
Diaphragm Assembly	Nitrile / Steel	
Element Retainer / Baffle	Acetal	
Filter Element	Sintered Polyethylene	
Panel Nut	Acetal	
Seals	Plastic Bowl	Nitrile
	Metal Bowl	Nitrile
Sight Gauge	Metal Bowl	Polyamide (Nylon)
Springs	Main Regulating / Valve	Steel / S.S.
Valve Assembly	Brass / Nitrile	

CAUTION:

REGULATOR PRESSURE ADJUSTMENT – The working range of knob adjustment is designed to permit outlet pressures within their full range. Pressure adjustment beyond this range is also possible because the knob is not a limiting device. This is a common characteristic of most industrial regulators, and limiting devices may be obtained only by special design.

For best performance, regulated pressure should always be set by increasing the pressure up to the desired setting.

Inches (mm)

= "Most Popular"

Replacement Bowl Kits

Metal Bowl –

Sight Gauge, Automatic Drain GRP-96-637
Sight Gauge, Manual Drain GRP-96-636

Plastic Bowl –

Bowl Guard, Automatic Drain GRP-96-635
Bowl Guard, Manual Drain GRP-96-634

Replacement Element Kits

Type "A", 5 Micron FRP-96-639
Retainer, Deflector, and Element Kit FRP-96-641

Replacement Kits

Adjusting Knob RRP-16-340-000

Diaphragm Assembly –

Non-relieving RRP-96-657B
Relieving RRP-96-656B

Spring, Regulating –

0 to 30 PSIG (0 to 2.1 bar) RRP-96-659B
0 to 60 PSIG (0 to 4.1 bar) RRP-96-660B
0 to 125 PSIG (0 to 8.6 bar) RRP-96-661B
0 to 250 PSIG (0 to 17.2 bar) RRP-96-662B

Accessories

Automatic Drain –

Fluorocarbon GRP-95-981
Nitrile GRP-95-973

Drain, Manual Override GRP-96-000

Manual Drain GRP-96-685

Panel Mount Nut –

Aluminum RRP-96-673
Plastic RRP-96-675B

Gauge, Pressure –

50mm (2") round 1/4" center back mount
0-30 PSIG / 0-2 bar K4520N14030
0-60 PSIG / 0-4 bar K4520N14060
0-160 PSIG / 0-11 bar K4520N14160
0-300 PSIG / 0-20 bar K4520N14300
0 to 160 PSIG, 1-3/4" Digital Round,
1/4" NPT K4517N14160D

Tamper Resistant Kit RRP-96-671

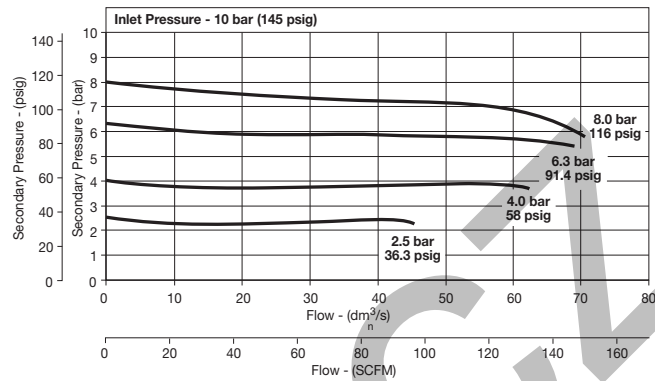
Tamperproof Lock & Cover Kit RPA-96-736

Sight Gauge Kit GRP-96-825

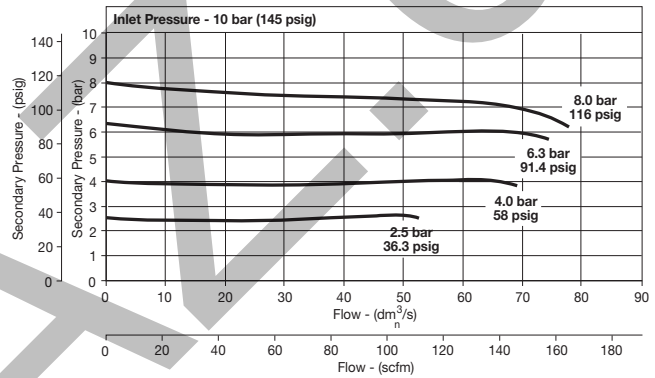
Wall Mounting Bracket

L-Type (Body) GPA-96-604
L-Type (Bonnet) GPA-96-606
T-Type GPA-96-602

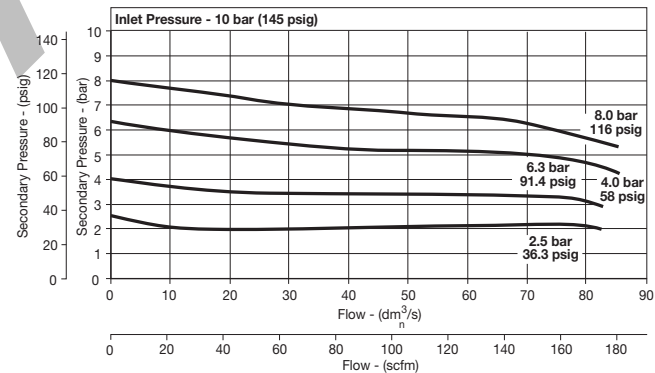
B08 1/4" Filter / Regulator



B18 3/8" Filter / Regulator



B08 1/2" Filter / Regulator

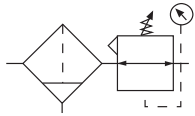


Ordering Information

Model Type	Port Size	Plastic Bowl / Bowl Guard With Gauge 5 to 125 PSIG (0.4 to 8.6 bar)	Metal Bowl / Sight Gauge With Gauge 5 to 125 PSIG (0.4 to 8.6 bar)
Manual Drain	1/4	B18-02-FKG0B	B18-02-FLG0B
	3/8	B18-03-FKG0B	B18-03-FLG0B
	1/2	B18-04-FKG0B	B18-04-FLG0B
Automatic Drain	1/4	B18-02-FGG0B	B18-02-FHG0B
	3/8	B18-03-FGG0B	B18-03-FHG0B
	1/2	B18-04-FGG0B	B18-04-FHG0B

Options - To order an option supplied with the unit model, add the appropriate coded suffix letter in the designated position of the model number.

Filter / Regulator CB6



CB6-02-000

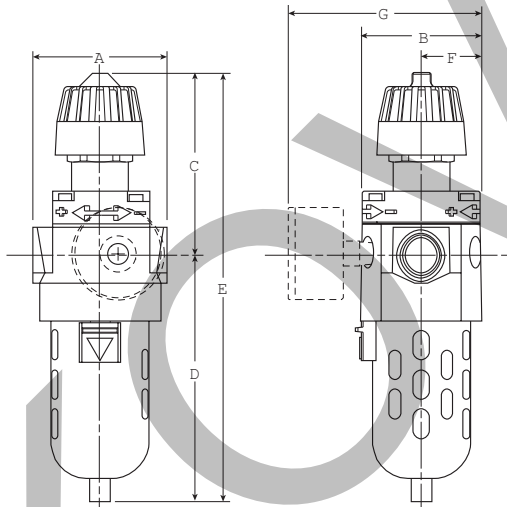
Features

- 5 Micron Filtration
- Balanced Valve
- Manual Flex Drain
- Integral Plastic Bowl / Bowl Guard
- Quick-Disconnect Bowl



WARNING

**Product rupture can cause serious injury.
Do not connect regulator to bottled gas.
Do not exceed maximum primary pressure rating.**



NOTE: 1.31" Dia. (33.3 mm) hole required for panel nut mounting.

Dimensions

Models	Inches (mm)	A	B	C	D	E	F	G
Standard Unit CB6-XX-000		3.00 (76)	2.64 (67)	3.95 (100)	5.43 (137.9)	9.38 (238)	1.34 (34)	4.18 (106)
Automatic Drain CB6-XX-F00		3.00 (76)	2.64 (67)	3.95 (100)	5.55 (140.9)	9.50 (241)	1.34 (34)	4.18 (106)
Metal Bowl CB6-XX-M00		3.00 (76)	2.64 (67)	3.95 (100)	6.05 (153.7)	10.00 (254)	1.34 (34)	4.18 (106)
Metal Bowl with Sight Gauge CB6-XX-G00		3.00 (76)	2.64 (67)	3.95 (100)	6.15 (156)	10.10 (256.5)	1.34 (34)	4.18 (106)

Specifications

Flow Capacity*	1/4	64.0 SCFM (30.2 dm ³ /s)
	3/8	70.0 SCFM (33.0 dm ³ /s)
	1/2	70.0 SCFM (33.0 dm ³ /s)

Adjusting Range Pressure	0 to 50 PSIG (0 to 3.5 bar)
	0 to 125 PSIG (0 to 8.6 bar)

Gauge Port (2)	NPT / BSPT-Rc	1/4
Maximum Supply Pressure	Plastic Bowl	150 PSIG (10.3 bar)
	Metal Bowl	200 PSIG (13.8 bar)
Operating Temperature	Plastic Bowl	32° to 125°F (0° to 52°C)
	Metal Bowl	32° to 150°F (0° to 65.5°C)
Port Size	NPT / BSPP-G	1/4, 3/8, 1/2
Standard Filtration		5 Micron
Weight		2.4 lb. (1.1 kg)

* Inlet pressure 100 PSIG (6.9 bar). Secondary pressure 90 PSIG (6.2 bar).

"F" Series Filters, Type "A" 5 Micron Elements: All Wilkerson Type "A" 5 micron elements **meet or exceed ISO Class 3** for maximum particle size and concentration of solid contaminants.

Materials of Construction

Body	Zinc	
Bonnet, Knob	PBT	
Bowls	Plastic Bowl	Polycarbonate
	Metal Bowl	Zinc
Diaphragm	Nitrile / Zinc	
Filter Element	Polyethylene	
Panel Nut	Acetal	
Seals	Plastic Bowl	Nitrile
	Metal Bowl	Fluorocarbon
Stem, Element Retainer and Deflector	Acetal	
Springs	Steel	
Valve Assembly	Brass / Nitrile	

CAUTION:

REGULATOR PRESSURE ADJUSTMENT – The working range of knob adjustment is designed to permit outlet pressures within their full range. Pressure adjustment beyond this range is also possible because the knob is not a limiting device. This is a common characteristic of most industrial regulators, and limiting devices may be obtained only by special design.

For best performance, regulated pressure should always be set by increasing the pressure up to the desired setting.

 = "Most Popular"

Replacement Bowl Kits

Metal Bowl –	
Automatic Float Drain	FRP-95-950
Brass Petcock Drain	FRP-95-178
Metal Bowl / Sight Gauge, Brass Petcock Drain ..	
GRP-95-133	
Plastic Bowl, Flex Tip Drain	FRP-95-017
Plastic Bowl / Bowl Guard –	
Automatic Float Drain	FRP-95-015
Flex Top Drain	FRP-95-014

Replacement Element Kits

Type "A", 5 Micron w/ Nitrile Bowl O-Ring	FRP-95-160
---	------------

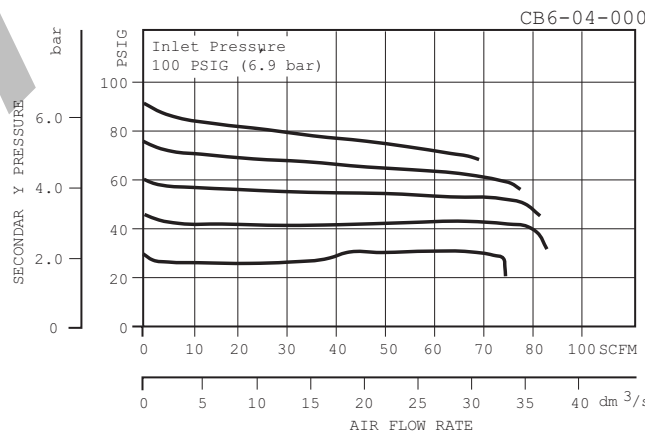
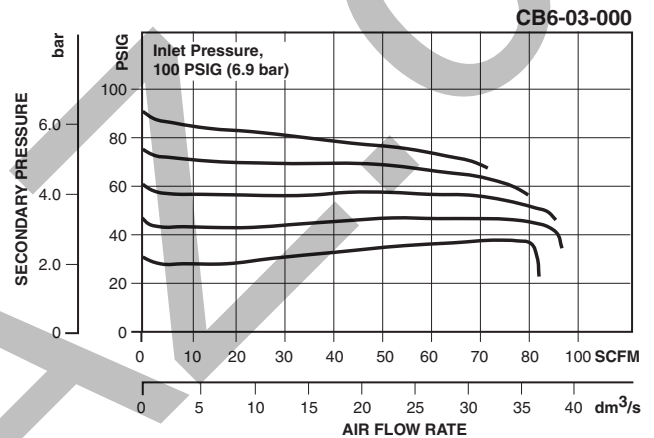
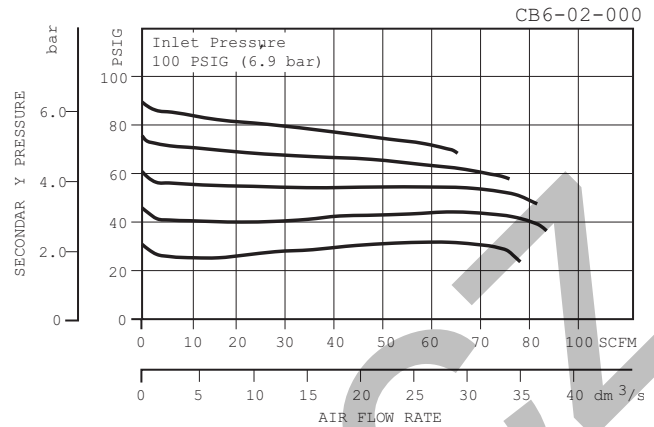
Replacement Kits

Diaphragm Assembly –	
Non-relieving	RRP-96-216
Self-relieving	RRP-96-213
Spring, Regulating –	
0 to 50 PSIG (0 to 3.4 bar) Blue Color	RRP-95-222
0 to 125 PSIG (0 to 8.5 bar) Silver Color	RRP-95-224

Accessories

Automatic Mech. Drain, 1/8" NPT –	
Fluorocarbon	GRP-95-981
Nitrile	GRP-95-973
Manual Flex Tip Drain	FRP-95-610
Wall Mounting Bracket –	
Gauge Port Adapter, 1/4" NPT	RRP-95-590
L-Type	GPA-95-012
Drain, Manual Override for	
Auto Float Drain, 1/8 NPT	GRP-96-000
Gauge, Pressure, 2" Dial Face, 1/4" NPT CBM –	
0 to 60 PSIG (0 to 4.1 bar)	K4520N14060W
0 to 160 PSIG (0 to 11.0 bar)	K4520N14160W
0 to 300 PSIG (0 to 21 bar)	K4520N14300W
0 to 160 PSIG, 1-3/4" Digital Round, 1/4" NPT ..	K4517N14160D
Panel Nut, Plastic	GPA-95-032
Tamper Resistant Kit	RPA-95-006

NOTE: Gauge not included, order separately by accessory number.

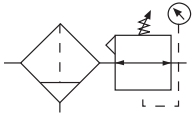


Ordering Information

Model Type	Port Size	Plastic Bowl / Bowl Guard 0 to 125 PSIG (0 to 8.6 bar)	Metal Bowl 0 to 125 PSIG (0 to 8.6 bar)	Metal Bowl w/ Sight Gauge 0 to 125 PSIG (0 to 8.6 bar)	Metal Bowl Low Pressure 0 to 50 PSIG (0 to 3.4 bar)
Manual Drain	1/4	CB6-02-000	CB6-02-M00	CB6-02-G00	CB6-02-LM0
	3/8	CB6-03-000	CB6-03-M00	CB6-03-G00	CB6-03-LM0
	1/2	CB6-04-000	CB6-04-M00	CB6-04-G00	CB6-04-LM0
Automatic Drain	1/4	CB6-02-F00	CB6-02-FM0	CB6-02-FG0	CB6-02-FLM
	3/8	CB6-03-F00	CB6-03-FM0	CB6-03-FG0	CB6-03-FLM
	1/2	CB6-04-F00	CB6-04-FM0	CB6-04-FG0	CB6-04-FLM

Options - To order an option supplied with the unit model, add the appropriate coded suffix letter in the designated position of the model number.

Precision Filter / Regulator PC6

 = "Most Popular"


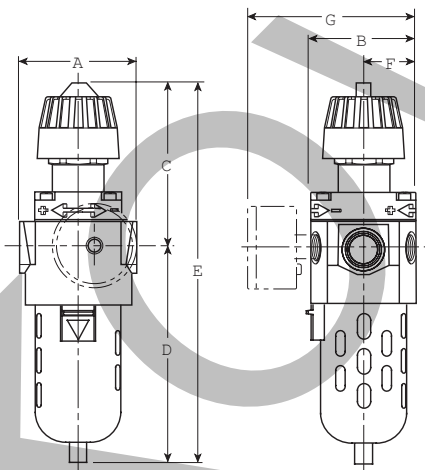
PC6-02-000

Precision Filter / Regulator

The PC6 models are general purpose regulators specifically designed for applications that require reliable performance and accurate pressure control.

Features

- **Stable Output** – Aspirator Design Minimizes “Droop” at Higher Flow Levels
- **Accuracy** – High Diaphragm-to-Valve-Area Ratio Combined with Unbalanced Valve Provides High Precision with Minimal Initial Pressure Droop
- **Quality Air** – 5 Micron Filtration for Superior Protection of Critical Downstream Equipment
- **Easy Maintenance** – May be Disassembled and Serviced without Removal from Air Line
- **Competitive** – Compact, Integral Filter / Regulator Can be Used Where Limited Space or Lower Cost is Required



NOTE: 1.31" Dia. (33.3 mm) hole required for panel nut mounting.

Dimensions

Models	Inches (mm)	A	B	C	D	E	F	G
Standard Unit PC6-XX-000		3.00 (76)	2.64 (67)	3.95 (100)	5.43 (137.9)	9.38 (238)	1.34 (34)	4.18 (106)
Automatic Drain PC6-XX-F00		3.00 (76)	2.64 (67)	3.95 (100)	5.55 (140.9)	9.50 (241)	1.34 (34)	4.18 (106)
Automatic Drain PC6-XX-G00		3.00 (76)	2.64 (67)	3.95 (100)	6.15 (156)	10.10 (256.5)	1.34 (34)	4.18 (106)

Specifications

Flow Capacity*	PC6	19.0 SCFM (9.0 dm ³ /s)
Gauge Port (2)	NPT / BSPT-Rc	1/4
Maximum Supply Pressure	Plastic Bowl Metal Bowl	150 PSIG (10.3 bar) 200 PSIG (13.8 bar)
Port Size	NPT / BSPP-G	1/4, 3/8, 1/2
Operating Temperature	Plastic Bowl Metal Bowl	32° to 125°F (0° to 52°C) 32° to 150°F (0° to 65.5°C)
Weight		2.4 lb. (1.1 kg)

* Inlet pressure 100 PSIG (6.9 bar).

Secondary pressure PC6, 45 PSIG (3.1 bar).

“F” Series Filters, Type “A” 5 micron elements: All Wilkerson Type “A” 5 micron elements **meet or exceed ISO Class 3** for maximum particle size and concentration of solid contaminants.

Materials of Construction

Body		Zinc
Bonnet, Knob		PBT
Bowls	Plastic Bowl Metal Bowl	Polycarbonate Zinc
Diaphragm		Nitrile / Zinc
Filter Element		Polypropylene
Panel Nut		Acetal
Seals	Plastic Bowl	Nitrile
Springs		Steel
Stem, Element Retainer and Deflector		Acetal
Valve Assembly		Brass / Nitrile

WARNING

**Product rupture can cause serious injury.
Do not connect regulator to bottled gas.
Do not exceed maximum primary pressure rating.**

CAUTION:

REGULATOR PRESSURE ADJUSTMENT – The working range of knob adjustment is designed to permit outlet pressures within their full range. Pressure adjustment beyond this range is also possible because the knob is not a limiting device. This is a common characteristic of most industrial regulators, and limiting devices may be obtained only by special design.

For best performance, regulated pressure should always be set by increasing the pressure up to the desired setting.

= "Most Popular"

Replacement Bowl Kits

Metal Bowl –

Automatic Drain PRP-96-006

Manual Drain PRP-95-070

Metal Bowl / Sight Gauge, Brass Petcock Drain .. PRP-95-071

Plastic Bowl, FlexTip Drain FRP-95-017

Plastic Bowl / Bowl Guard –

Automatic Drain FRP-95-015

FlexTip Drain FRP-95-014

Replacement Element Kits

Type "A", 5 Micron..... FRP-95-160

Replacement Kits

Diaphragm Assembly –

Non-relieving, Nitrile..... PRP-95-055

Self-relieving, Nitrile PRP-95-025

Spring, Regulating –

0 to 15 PSIG (1 bar) RRP-95-233

0 to 30 PSIG (2,1 bar)..... RRP-95-916

0 to 50 PSIG (0 to 3,4 bar) RRP-95-222

0 to 125 PSIG (0 to 8,5 bar) RRP-95-224

Accessories

Automatic Mechanical Drain

1/8 NPT, Fluorocarbon..... GRP-95-981

1/8 NPT, Nitrile GRP-95-973

Drain, Manual Override for

Auto Float Drain, 1/8 NPT..... GRP-96-000

FlexTip Drain FRP-95-610

Gauge, Pressure, 2" Dial Face, 1/4 NPT, CBM –

0 to 30 PSIG (0 to 2,1 bar) K4520N14030W

0 to 60 PSIG (0 to 4 bar)..... K4520N14060W

0 to 120 PSIG (0 to 8,3 bar) K4520N14160W

0 to 160 PSIG, 1-3/4" Digital Round, 1/4" NPT. K4517N14160D

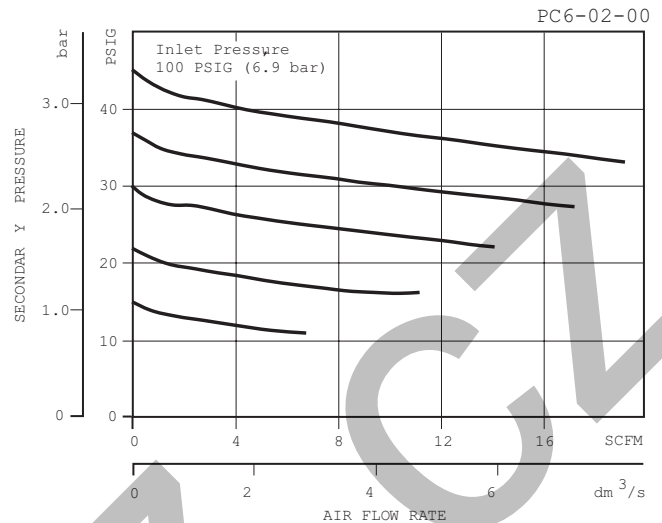
Panel Nut, Plastic GPA-95-032

Tamper Resistant Kit..... RPA-95-006

Wall Mounting Bracket –

Gauge Port Adapter, 1/4 NPT RRP-95-590

L-Type w/Panel Mount Nut GPA-95-011

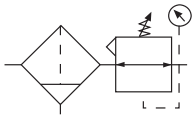


Ordering Information

Model Type	Port Size	Standard Unit 0 to 50 PSIG (0 to 3.4 bar)	Automatic Mechanical Drain	Sight Gauge	High Pressure 0 to 125 PSIG (0 to 8.6 bar)	Low Pressure 0 to 30 PSIG (0 to 2.1 bar)	Metal Bowl	Fluorocarbon Seals
Relieving	1/4	PC6-02-000	PC6-02-F00	PC6-02-G00	PC6-02-H00	PC6-02-L00	PC6-02-M00	PC6-02-V00
	3/8	PC6-03-000	PC6-03-F00	PC6-03-G00	PC6-03-H00	PC6-03-L00	PC6-03-M00	PC6-03-V00
	1/2	PC6-04-000	PC6-04-F00	PC6-04-G00	PC6-04-H00	PC6-04-L00	PC6-04-M00	PC6-04-V00
Non-relieving	1/4	PC6-02-N00	PC6-02-FN0	PC6-02-GN0	PC6-02-HN0	PC6-02-LN0	PC6-02-MN0	PC6-02-VN0
	3/8	PC6-03-N00	PC6-03-FN0	PC6-03-GN0	PC6-03-HN0	PC6-03-LN0	PC6-03-MN0	PC6-03-VN0
	1/2	PC6-04-N00	PC6-04-FN0	PC6-04-GN0	PC6-04-HN0	PC6-04-LN0	PC6-04-MN0	PC6-04-VN0

Options - To order an option supplied with the unit model, add the appropriate coded suffix letter in the designated position of the model number.

Filter / Regulator B28

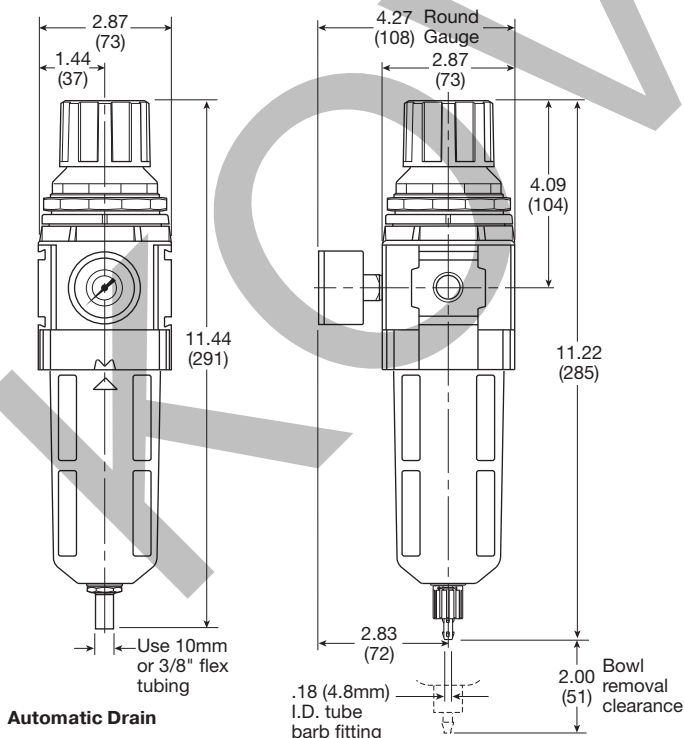


Features

- 5 Micron Filtration
- Balanced Valve Design
- Spring Loaded Diaphragm
- 3/4" NPT / BSPP-G Over-Ported
- Quick-Disconnect Bowl / Bowl Guard
- Light Weight
- High Flow Capacities

WARNING

**Product rupture can cause serious injury.
Do not connect regulator to bottled gas.
Do not exceed maximum primary pressure rating.**



Inches (mm)

Manual Drain

Specifications

Flow Capacity*	3/8	200 SCFM (94 dm ³ /s, ANR)
	1/2	200 SCFM (94 dm ³ /s, ANR)
	3/4	235 SCFM (109 dm ³ /s, ANR)
Adjusting Range Pressure		0 to 30 PSIG (0 to 2.1 bar)
		0 to 60 PSIG (0 to 4.1 bar)
		0 to 125 PSIG (0 to 8.6 bar)
		0 to 250 PSIG (0 to 17.2 bar)
Gauge Port (2)	NPT / BSPP-G	1/4
Maximum Supply Pressure	Plastic Bowl	150 PSIG (10.3 bar)
	Metal Bowl	250 PSIG (17.2 bar)
Operating Temperature	Plastic Bowl	-13° to 125°F (-25° to 52°C)
	Metal Bowl	-13° to 150°F (-25° to 65.5°C)
Port Size	NPT / BSPP-G	3/8, 1/2, 3/4
Bowl Capacity		2.87 oz
Standard Filtration		5 Micron
Weight		1.87 lb. (0.85 kg)

* Inlet pressure 145 psig (10 bar). Secondary pressure 91.3 psig (6.3 bar) and 14.5 psig (1 bar) pressure drop.

"F" Series Filters, Type "A" 5 micron elements: All Wilkerson Type "A" 5 micron elements **meet or exceed ISO Class 3** for maximum particle size and concentration of solid contaminants.

Air quality: Within ISO 8573-1: 1991 Class 3 (Particulates)
Within ISO 8573-1: 2001 Class 6 (Particulates)

Materials of Construction

Adjustment Knob	Acetal	
Body	Aluminum	
Body Cap	ABS	
Bowls	Plastic Bowl	Polycarbonate
	Metal Bowl	Aluminum
Diaphragm Assembly	Nitrile / Zinc	
Element Retainer / Baffle	Acetal	
Filter Element	Sintered Polyethylene	
Panel Nut	Acetal	
Seals	Plastic Bowl	Nitrile
	Metal Bowl	Nitrile
Sight Gauge	Metal Bowl	Polyamide (Nylon)
Springs	Main Regulating / Valve	Steel / S.S.
Valve Assembly	Brass / Nitrile	

CAUTION:

REGULATOR PRESSURE ADJUSTMENT – The working range of knob adjustment is designed to permit outlet pressures within their full range. Pressure adjustment beyond this range is also possible because the knob is not a limiting device. This is a common characteristic of most industrial regulators, and limiting devices may be obtained only by special design.

For best performance, regulated pressure should always be set by increasing the pressure up to the desired setting.

= "Most Popular"

Replacement Bowl Kits

Metal Bowl –

- Sight Gauge, Automatic Drain GRP-96-645
Sight Gauge, Manual Drain GRP-96-644

Plastic Bowl –

- Bowl Guard, Automatic Drain GRP-96-643
Bowl Guard, Manual Drain GRP-96-642

Replacement Element Kits

- Type "A", 5 Micron FRP-96-653
Element, Deflector, Retainer kit FRP-96-283

Replacement Kits

- Adjusting Knob RRP-16-341-000

Diaphragm Assembly –

- Non-relieving RRP-96-987
Relieving RRP-96-986

Spring, Regulating –

- 0 to 30 PSIG (0 to 2.1 bar) RRP-96-163
0 to 60 PSIG (0 to 4.1 bar) RRP-96-164
0 to 125 PSIG (0 to 8.6 bar) RRP-96-165
0 to 250 PSIG (0 to 17.2 bar) RRP-96-166

- Valve Assembly RRP-96-049

Accessories

Automatic Drain –

- Fluorocarbon GRP-95-981
Nitrile GRP-95-973

- Manual Drain GRP-96-685

Panel Mount Nut –

- Aluminum RRP-96-674
Plastic RRP-96-676

Gauge, Pressure –

- 50mm (2") round 1/4" center back mount
0-30 PSIG / 0-2 bar K4520N14030
0-60 PSIG / 0-4 bar K4520N14060
0-160 PSIG / 0-11 bar K4520N14160
0-300 PSIG / 0-20 bar K4520N14300
0 to 160 PSIG, 1-3/4" Digital Round,
1/4" NPT K4517N14160D

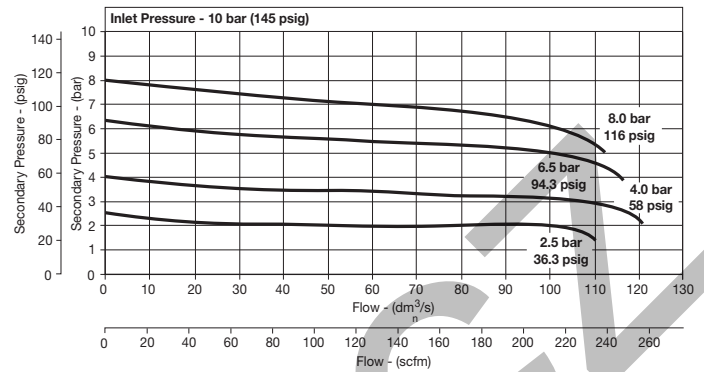
- Tamper Resistant Kit RRP-96-672

- Sight Gauge Kit GRP-96-825

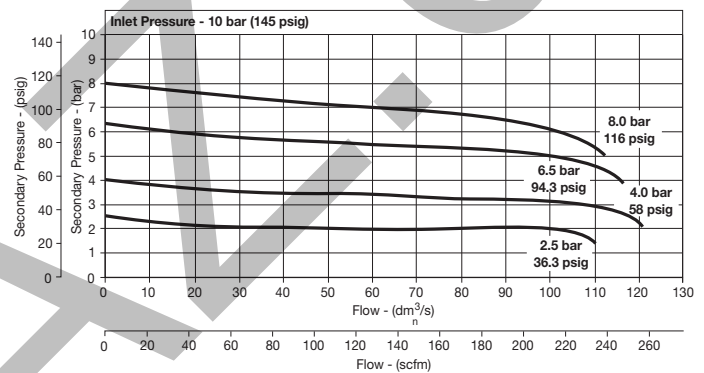
Wall Mounting Bracket –

- L-Type (Body) GPA-96-605
L-Type (Bonnet) GPA-96-607
T-Type GPA-96-602

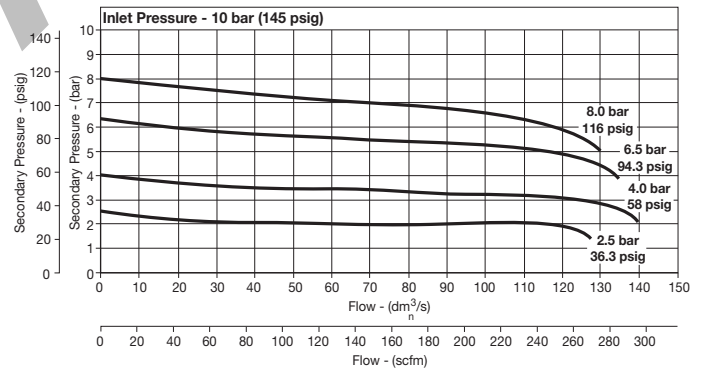
B28 3/8" Filter / Regulator



B28 1/2" Filter / Regulator



B18 3/8" Filter / Regulator



Ordering Information

Model Type	Port Size	Plastic Bowl / Bowl Guard With Gauge 5 to 125 PSIG (0.4 to 8.6 bar)	Metal Bowl / Sight Gauge With Gauge 5 to 125 PSIG (0.4 to 8.6 bar)
Manual Drain	3/8	B28-03-FKG0B	B28-03-FLG0B
	1/2	B28-04-FKG0B	B28-04-FLG0B
	3/4	B28-06-FKG0B	B28-06-FLG0B
Automatic Drain	3/8	B28-03-FGG0B	B28-03-FHG0B
	1/2	B28-04-FGG0B	B28-04-FHG0B
	3/4	B28-06-FGG0B	B28-06-FHG0B

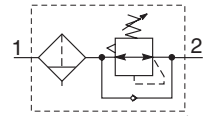
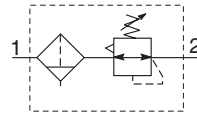
Options - To order an option supplied with the unit model, add the appropriate coded suffix letter in the designated position of the model number.

Filter / Regulator B90



 = "Most Popular"

Symbols



Features

- Integral 3/4" or 1" ports (BSPP or NPT)
- High efficiency element as standard
- Excellent water removal efficiency
- Robust but lightweight aluminum construction
- Secondary pressure ranges 12 and 16 bar
- Rolling diaphragm for extended life
- Secondary aspiration plus balanced poppet provides quick response and accurate pressure regulation
- Reverse flow / relieving option
- Low temperature -40° with combined manual / semi-auto drain as standard

B90	-	0		6	-	A	H	0	0
Series		Thread type*		Port size		Function / pressure range	Bowl / drain type	Option	
Filter / Regulator Combination	B90	NPT	0	3/4	6	A Relieving / 0 to 174 PSI	H Metal bowl / sight gauge & auto drain	0	None
		BSPP	C	1	8	H Relieving / 0 to 232 PSI	L Metal bowl / sight gauge / manual & semi auto drain	G	Pressure Gauge
								A†	Lockable type

Notes:

* For 1-1/2" ported unit, please order P3YKA*BCP port block kit separately.

† Not field convertible.

Bold items are most common.

Ordering information

Port size	Description	Flow† scfm	Max. bar (psig)	Min temp °C (°F)	Max temp °C (°F)	Bowl capacity cm³ (oz)	Height mm (inches)	Width mm (inches)	Depth mm (inches)	Weight kg (lb)	Part number †
3/4"	12 bar, relieving, combined manual / semi auto drain	335	17.5 (254)	-40 (-40)	60 (140)	130 (4.4)	345 (13.5)	90 (3.5)	94 (3.7)	1.5 (3.3)	B90-06-AL00
3/4"	12 bar, relieving, auto drain	335	17.5 (254)	-10 (14)	60 (140)	130 (4.4)	345 (13.5)	90 (3.5)	94 (3.7)	1.5 (3.3)	B90-06-AH00
3/4"	12 bar, relieving, gauge, combined manual / semi auto drain	335	17.5 (254)	-10 (14)	60 (140)	130 (4.4)	345 (13.5)	90 (3.5)	94 (3.7)	1.5 (3.3)	B90-06-ALG0
3/4"	12 bar, relieving, gauge, auto drain	335	17.5 (254)	-10 (14)	60 (140)	130 (4.4)	345 (13.5)	90 (3.5)	94 (3.7)	1.5 (3.3)	B90-06-AHG0
1"	12 bar, relieving, combined manual / semi auto drain	465	17.5 (254)	-40 (-40)	60 (140)	130 (4.4)	345 (13.5)	90 (3.5)	94 (3.7)	1.5 (3.3)	B90-08-AL00
1"	12 bar, relieving, auto drain	465	17.5 (254)	-10 (14)	60 (140)	130 (4.4)	345 (13.5)	90 (3.5)	94 (3.7)	1.5 (3.3)	B90-08-AH00
1"	12 bar, relieving, gauge, combined manual / semi auto drain	465	17.5 (254)	-10 (14)	60 (140)	130 (4.4)	345 (13.5)	90 (3.5)	94 (3.7)	1.5 (3.3)	B90-08-ALG0
1"	12 bar, relieving, gauge, auto drain	465	17.5 (254)	-10 (14)	60 (140)	130 (4.4)	345 (13.5)	90 (3.5)	94 (3.7)	1.5 (3.3)	B90-08-AHG0

† **Standard part numbers shown in bold. For other models refer to Options chart above.**

† Flow with 10 bar (145 psig) inlet pressure, 6.3 bar (91.4 psig) set pressure and 1 bar (14.5 psig) pressure drop.

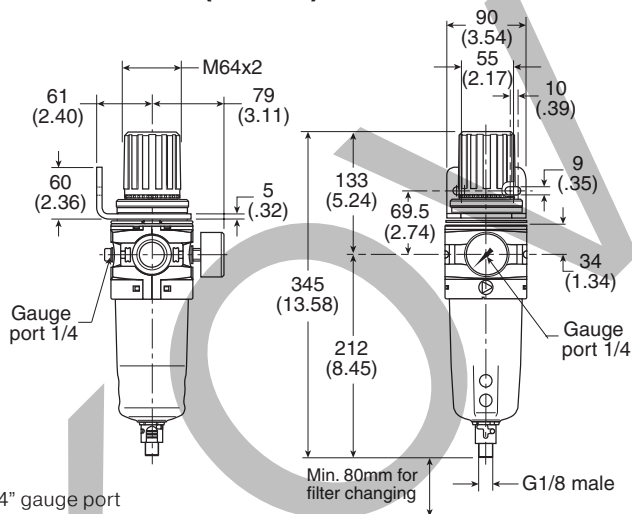
Lockable regulators will require key lock kit (opposite page).

Specifications

Fluid	Compressed air
Maximum inlet pressure*	17.5 bar (254 psig)
Temperature range*:	
Auto drain	-10°C to 60°C (14°F to 140°F)
Combined drain	-40°C to 60°C (-40°F to 140°F)
Particle removal	5 micron
Air quality	Within ISO 8573-1: 1991 Class 3 and 5 (particulates) Within ISO 8573-1: 2001 Class 6 and 7 (particulates)
Typical flow with 10 bar (145 psig) inlet pressure and 6.3 bar (91 psig) set pressure and 0.5 bar (7.3 psig) pressure drop	1" size 465 scfm
Manual / semi-auto drain	Closed at 0.8 bar (11.6 psig) G1/8 thread male
Auto drain bowl pressure to close drain	0.8 bar (11.6 psig)
Operating range manual override facility	0.8 bar (11.6 psig) to 17.5 bar (254 psig)
Bowl capacity	130 cm ³ (4.4 US oz)
Gauge ports (x2)	1/4"

* Air supply must be dry enough to avoid ice formation at temperatures below 2°C (35.6°F).

Dimensions mm (inches)



* 1/4" gauge port

Service kits

5 micron element kit	P3YKA00ESE
Bowl kit	
Manual/semi auto drain (combined)	P3YKA00BSC
Auto drain	P3YKA00BSA
Key lock kit.....	P3XKA00AS
Diaphragm kit	
Relieving type	P3YKA00RR
Non-relieving type.....	P3YKA00RN
Angle bracket + metal lock ring	P3YKA00MS
Panel mount nut	P3YKA00MM

Material specifications

Body	Aluminum
Sight glass	Polypropylene
Body cover	ABS
Element	Sintered polypropylene
Seals	Nitrile NBR
Drains	Manual / semi-auto: Acetal
	Automatic: PA / Ø 10mm brass connection
Bonnet	Glass filled polyamide
Control knob	Glass filled polyamide
Valve	Brass / NBR
Screws	Steel / zinc plated

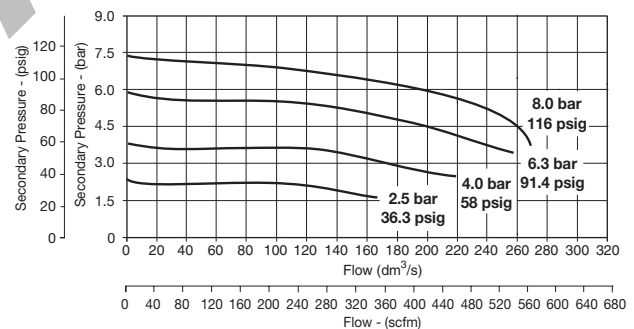
CAUTION:

REGULATOR PRESSURE ADJUSTMENT – The working range of knob adjustment is designed to permit outlet pressures within their full range. Pressure adjustment beyond this range is also possible because the knob is not a limiting device. This is a common characteristic of most industrial regulators, and limiting devices may be obtained only by special design.

For best performance, regulated pressure should always be set by increasing the pressure up to the desired setting.

Flow characteristics

(3/4") 5 Micron Filter / Regulator



(1") 5 Micron Filter / Regulator

