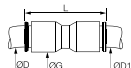


## 6306 Equal and Unequal Tube-to-Tube Connector

Bio-based polymer, EPDM

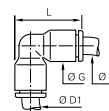


ØD	ØD1		G	L	Kg
4	4	6306 04 00WP2	8.5	26.5	0.002
	6	6306 04 06WP2	10.5	29	0.002
	8	6306 04 08WP2	13.5	37	0.005
6	6	6306 06 00WP2	10.5	30	0.004
	8	6306 06 08WP2	13.5	37	0.005
	10	6306 06 10WP2	16	42	0.007
8	8	6306 08 00WP2	13.5	37	0.004
	10	6306 08 10WP2	16	42	0.007
	12	6306 08 12WP2	19	50	0.012
10	10	6306 10 00WP2	16	42	0.009
	12	6306 10 12WP2	19	50	0.013
12	12	6306 12 00WP2	19	50.5	0.009
16	16	6306 16 00	27	60.5	0.023

## 6302 Equal and Unequal Union Elbow

Inch

Bio-based polymer, EPDM

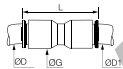


ØD	ØD1		G	L	Kg
5/16	3/8	6302 08 60WP2	16	34	0.009
	1/4	6302 56 00WP2	11	24	0.005
1/4	5/16	6302 56 08WP2	13.5	29.5	0.006
	3/8	6302 56 60WP2	16	34	0.008
3/8	3/8	6302 60 00WP2	16	34	0.006
	1/2	6302 60 62WP2	22	46.5	0.011
1/2	1/2	6302 62 00WP2	22	46.5	0.017

## 6306 Equal and Unequal Union Connector

Inch

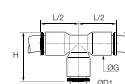
Bio-based polymer, EPDM



ØD	ØD1		G	L	Kg
5/16	3/8	6306 08 60WP2	16	42	0.008
	1/2	6306 08 62WP2	22	55	0.018
1/4	1/4	6306 56 00WP2	11	30	0.004
	3/8	6306 56 60WP2	16	41	0.007
3/8	3/8	6306 60 00WP2	16	42	0.006
	1/2	6306 60 62WP2	22	56	0.020
1/2	1/2	6306 62 00WP2	22	57	0.016

## 6304 Union Tee

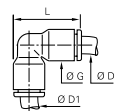
Bio-based polymer, EPDM



ØD	ØD1		G	H	L/2	Kg
4	4	6304 04 00WP2	8.5	20	15.5	0.004
6	6	6304 06 00WP2	10.5	23	18	0.006
8	8	6304 08 00WP2	13.5	29	22.5	0.006
10	10	6304 10 00WP2	16	34.5	26.5	0.009
12	12	6304 12 00WP2	19	40	31	0.014
16	16	6304 16 00	27	53	39	0.037
	12	6304 16 12	27	53	39	0.063

## 6302 Equal and Unequal Elbow

Bio-based polymer, EPDM

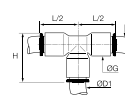


ØD	ØD1		G	L	Kg
4	4	6302 04 00WP2	8.5	19	0.002
	6	6302 04 06WP2	10.5	24	0.004
6	6	6302 06 00WP2	10.5	24	0.004
	8	6302 06 08WP2	13.5	29.5	0.006
8	8	6302 08 00WP2	13.5	29	0.004
	10	6302 08 10WP2	16	34.5	0.008
10	10	6302 10 00WP2	16	34.5	0.005
	12	6302 10 12WP2	19	40.5	0.013
12	12	6302 12 00WP2	19	40.5	0.010
16	16	6302 16 00	27	53	0.024

## 6304 Equal and Unequal Union Tee

Inch

Bio-based polymer, EPDM

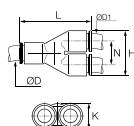


ØD	ØD1		G	H	L/2	Kg
1/4	1/4	6304 56 00WP2	11	24	18	0.002
3/8	3/8	6304 60 00WP2	16	34	26	0.009
	1/4	6304 60 56WP2	16	34	26	0.011
1/2	1/2	6304 62 00WP2	22	47	36	0.027
	3/8	6304 62 60WP2	22	47	36	0.009

5/32" (4mm) and 5/16" (8mm) also available

## 6340 Equal Single Y Piece

Bio-based polymer, EPDM

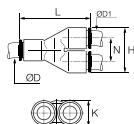


ØD	ØD1		H	K	L	N	Kg
4	4	<b>6340 04 00WP2</b>	17.5	8.5	30	9	0.004
6	6	<b>6340 06 00WP2</b>	21.5	10.5	36.5	11	0.008
8	8	<b>6340 08 00WP2</b>	28	13.5	44.5	14.5	0.007
10	10	<b>6340 10 00WP2</b>	33	16	53	17	0.010
12	12	<b>6340 12 00WP2</b>	39	19	60.5	20	0.025

## 6340 Equal Single Y Piece

Inch

Bio-based polymer, EPDM

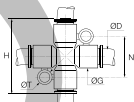


ØD	ØD1		H	K	L	N	Kg
1/4	1/4	<b>6340 56 00WP2</b>	22	11	36	11.5	0.010
3/8	3/8	<b>6340 60 00WP2</b>	33	16	53	17	0.011
1/2	1/2	<b>6340 62 00WP2</b>	45	22	67	23	0.028

5/32" (4 mm) and 5/16" (8 mm) also available.

## 6307 Equal Cross

Bio-based polymer, EPDM

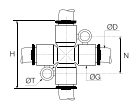


ØD		G	H	N	ØT	Kg
6	<b>6307 06 00WP2</b>	11	36	20	4.2	0.005
8	<b>6307 08 00WP2</b>	13.5	45	22.5	4.2	0.020

## 6307 Equal Cross

Inch

Bio-based polymer, EPDM

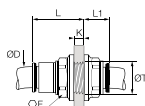


ØD		G	H	L	ØT	Kg
1/4	<b>6307 56 00WP2</b>	11	36	20	4.2	0.010

5/16" (8 mm) also available

## 6316 Equal Bulkhead Union

Bio-based polymer, EPDM

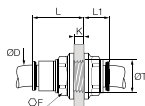


ØD		F	K max	L	L1	ØT min	Kg
4	<b>6316 04 00WP2</b>	13	5.5	15.5	10.5	10.5	0.018
6	<b>6316 06 00WP2</b>	15	8.5	20	10	12.5	0.004
8	<b>6316 08 00WP2</b>	18	14.5	27	10.5	15.5	0.007
10	<b>6316 10 00WP2</b>	22	14.5	30	13	18.5	0.012
12	<b>6316 12 00WP2</b>	26	18.5	35	15.5	22.5	0.020

## 6316 Bulkhead Union

Inch

Bio-based polymer, EPDM

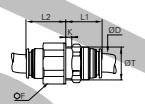


ØD		F	K max	L	L1	ØT min	Kg
1/4	<b>6316 56 00WP2</b>	15	8.5	20	10	12.5	0.004
3/8	<b>6316 60 00WP2</b>	22	14.5	29.5	12.5	18.5	0.012
1/2	<b>6316 62 00WP2</b>	29	20.5	40.5	17	25.5	0.030

5/32" (4mm) and 5/16" (8mm) also available

## 6976 Bulkhead Union

Stainless steel 316L, EPDM



ØD		F	K max	L1	L2	ØT min	Kg
16	<b>6976 16 00</b>	32	10.5	33	30	27.5	0.166

Electrical protection/class IP55

## Complementary LIQUIfit® Range Products

The other LIQUIfit® range products are presented in the corresponding chapters of this catalogue:

Technical Tubing and Hose

Advanced PE



Function Fittings

Non-Return Valves



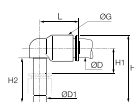
Industrial Ball Valves

LIQUIfit® Ball Valves



## 6382 Equal and Unequal Plug-In Elbow

Bio-based polymer, EPDM

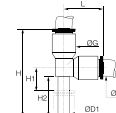


ØD	ØD1		G	H	H1	H2	L	Kg
4	4	<b>6382 04 00WP2</b>	8.5	23	6	15.5	15	0.003
	6	<b>6382 04 06WP2</b>	10.5	26.5	7	17	16.5	0.002
	6	<b>6382 06 00WP2</b>	10.5	26.5	7	17	17	0.003
6	4	<b>6382 06 04WP2</b>	10.5	25	7	15.5	17	0.001
	8	<b>6382 06 08WP2</b>	13.5	33.5	8	21.5	22.5	0.004
8	8	<b>6382 08 00WP2</b>	13.5	33.5	8	21.5	22.5	0.004
	10	<b>6382 08 10WP2</b>	16	39	9.5	24.5	26	0.007
10	10	<b>6382 10 00WP2</b>	16	39	9.5	24.5	26.5	0.004
	12	<b>6382 10 12WP2</b>	19	44.5	10	27	30	0.011
12	12	<b>6382 12 00WP2</b>	19	44.5	10	27	31	0.012

The references in diameter 4mm and 12mm are not grooved in standard version

## 6383 Plug-In Equal Run Tee

Bio-based polymer, EPDM

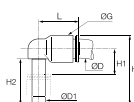


ØD	ØD1		G	H	H1	H2	L	Kg
4	4	<b>6383 04 00WP2</b>	8.5	33	6	15.5	15	0.002
6	6	<b>6383 06 00WP2</b>	10.5	38.5	7	17	18	0.002
8	8	<b>6383 08 00WP2</b>	13.5	49	8	21.5	23	0.005
10	10	<b>6383 10 00WP2</b>	16	57	10.5	25.5	26.5	0.012

## 6382 Equal and Unequal Plug-In Elbow

Inch

Bio-based polymer, EPDM



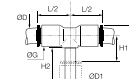
ØD	ØD1		G	H	H1	H2	L	Kg
5/16	3/8	<b>6382 08 60WP2</b>	16	39	10	24.5	26	0.009
1/4	1/4	<b>6382 56 00WP2</b>	11	30.5	11	18	18	0.002
	3/8	<b>6382 56 60WP2</b>	16	39	9	24.5	25.5	0.006
3/8	3/8	<b>6382 60 00WP2</b>	16	39	9	24.5	26.5	0.005
1/2	1/2	<b>6382 62 00WP2</b>	22	49	13	28.5	36	0.004

Equal plug-in elbow: 5/32" (4 mm) and 5/16" (8 mm) also available

The references in diameter 4mm and 12mm are not grooved in standard version

## 6388 Plug-In Equal Branch Tee

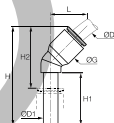
Bio-based polymer, EPDM



ØD	ØD1		G	H	H1	H2	L/2	Kg
4	4	<b>6388 04 00WP2</b>	8.5	25	6	15.5	15	0.005
6	6	<b>6388 06 00WP2</b>	10.5	28.5	7	17	16	0.006
8	8	<b>6388 08 00WP2</b>	13.5	33.5	8	21.5	23	0.005
10	10	<b>6388 10 00WP2</b>	16	41	9.5	24.5	26.5	0.007

## 6380 Plug-In 45° Equal Elbow

Bio-based polymer, EPDM

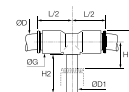


ØD	ØD1		G	H	H1	H2	L	Kg
4	4	<b>6380 04 00WP2</b>	8.5	33.5	19	21	13	0.001
6	6	<b>6380 06 00WP2</b>	11	39	21	25	14.5	0.002
8	8	<b>6380 08 00WP2</b>	13.5	44	21.5	25.5	19.5	0.006
10	10	<b>6380 10 00WP2</b>	16	53	27	32.5	23	0.004
12	12	<b>6380 12 00WP2</b>	19	58	27	34	26	0.012

## 6388 Plug-In Branch Tee

Inch

Bio-based polymer, EPDM



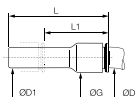
ØD	ØD1		G	H	H1	H2	L/2	Kg
1/4	1/4	<b>6388 56 00WP2</b>	11	30.5	11	20	18	0.002
3/8	3/8	<b>6388 60 00WP2</b>	16	42	12	25	25	0.008

5/32" (4 mm) and 5/16" (8 mm) also available.

For rotary applications, we recommend the use of a special grooved version, available upon request.

## 6366 Plug-In Reducer

Bio-based polymer, EPDM

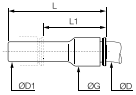


ØD	ØD1		G	L	L1	Kg
4	6	<b>6366 04 06WP2</b>	8.5	38	23.5	0.004
	8	<b>6366 04 08WP2</b>	8.5	38	19	0.004
6	8	<b>6366 06 08WP2</b>	10.5	38	20	0.004
	10	<b>6366 06 10WP2</b>	10.5	39	17.5	0.002
8	10	<b>6366 08 10WP2</b>	13.5	48.5	28.5	0.009
	12	<b>6366 08 12WP2</b>	13.5	48.5	24.5	0.004
10	12	<b>6366 10 12WP2</b>	16	52	33.5	0.005
	14	<b>6366 10 14WP2</b>	16	53	33.5	0.005

## 6366 Plug-In Reducer

Inch

Bio-based polymer, EPDM

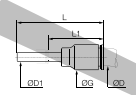


ØD	ØD1		G	L	L1	Kg
1/4	5/16	<b>6366 56 08WP2</b>	11	41	22.5	0.015
	3/8	<b>6366 56 60WP2</b>	11	41	20.5	0.002
5/16	3/8	<b>6366 08 60WP2</b>	13.5	48.5	29	0.003
	1/2	<b>6366 08 62WP2</b>	16	48.5	22	0.007
3/8	1/2	<b>6366 60 62WP2</b>	16	51	30	0.011

## 6368 Plug-In Increaser

Inch

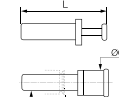
Bio-based polymer, EPDM



ØD	ØD1		G	L	L1	Kg
3/8	5/16	<b>6368 60 08WP2</b>	16	44	25.5	0.004

## 6326 Blanking Plug

Bio-based polymer

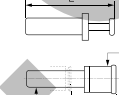


ØD		G	L	L1	Kg
4	<b>6326 04 00WP2</b>	6	30	15.5	0.002
6	<b>6326 06 00WP2</b>	8	33	16.5	0.002
8	<b>6326 08 00WP2</b>	10	35	17.5	0.002
10	<b>6326 10 00WP2</b>	12	42	21	0.003
12	<b>6326 12 00WP2</b>	14	45	22	0.004

## 6326 Blanking Plug

Inch

Bio-based polymer

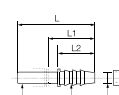


ØD		G	L	L1	Kg
1/4	<b>6326 56 00WP2</b>	8	36.5	22	0.002
3/8	<b>6326 60 00WP2</b>	11.6	42.5	22	0.002
1/2	<b>6326 62 00WP2</b>	14.7	48.5	21.5	0.004

5/32" (4 mm) and 5/16" (8 mm) also available

## 6322 Plug-In Barb Connector

Bio-based polymer

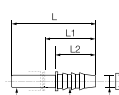


ØD	ØD1	ØD2		L	L1	L2	Kg
6	4	6	<b>6322 06 04WP2</b>	39	25	17	0.004
8	6	8	<b>6322 08 06WP2</b>	43	25	17	0.005
10	7	9	<b>6322 10 07WP2</b>	50	29.5	22	0.006
12	12.5	15.5	<b>6322 12 62WP2</b>	56	32	27.5	0.004

## 6322 Plug-In Barb Connector

Inch

Bio-based polymer



ØD	ØD1	ØD2		L	L1	L2	Kg
1/4	0.28	0.32	<b>6322 56 56WP2</b>	39	24.5	17	0.001
	0.33	0.38	<b>6322 60 08WP2</b>	50	29.5	22	0.002
3/8	0.28	0.32	<b>6322 60 56WP2</b>	45	24.5	17	0.008
	0.40	0.45	<b>6322 60 60WP2</b>	50	29	22	0.002
1/2	0.40	0.45	<b>6322 62 60WP2</b>	58	37.5	30	0.005

## 6351 End Cap

Bio-based polymer, EPDM



ØD		G	H	Kg
4	<b>6351 04 00WP2</b>	8.5	15	0.001
6	<b>6351 06 00WP2</b>	10.5	17	0.002
8	<b>6351 08 00WP2</b>	13.5	21.5	0.003
10	<b>6351 10 00WP2</b>	16	22	0.003
12	<b>6351 12 00WP2</b>	19	27.5	0.006

## 6351 End Cap

Inch

Bio-based polymer, EPDM

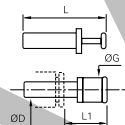


ØD		G	H	Kg
1/4	<b>6351 56 00WP2</b>	11	16	0.001
3/8	<b>6351 60 00WP2</b>	16	22.5	0.003

5/32" (4 mm) and 5/16" (8 mm) also available

## 6986 Blanking Plug

Stainless steel 316L



<b>6986 16 00</b>
-------------------

Up to +150°C