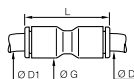


# LF 3000® Push-In Fittings / Tube-to-Tube Fittings

## 3106 Equal and Unequal Tube-to-Tube Connector

Technical polymer, NBR

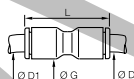


ØD	ØD1		G	L	Kg
3	3	<b>3106 03 00</b>	8.5	25	0.002
	4	<b>3106 03 04</b>	8.5	25	0.002
	1/4	<b>3106 04 56</b>	11	29.5	0.005
4	4	<b>3106 04 00</b>	8.5	25	0.001
	6	<b>3106 04 06</b>	11	28	0.002
	8	<b>3106 04 08</b>	13.5	38	0.005
6	1/4	<b>3106 06 56</b>	13.5	36	0.009
	6	<b>3106 06 00</b>	10.5	28.5	0.002
	8	<b>3106 06 08</b>	13.5	38	0.005
8	10	<b>3106 06 10</b>	16	42	0.008
	8	<b>3106 08 00</b>	13.5	38	0.004
	10	<b>3106 08 10</b>	16	42	0.007
10	12	<b>3106 08 12</b>	19	50.5	0.026
	10	<b>3106 10 00</b>	16	42	0.005
	12	<b>3106 10 12</b>	19	50.5	0.018
12	1/2	<b>3106 12 62</b>	22	56.5	0.041
	12	<b>3106 12 00</b>	19	50.5	0.009
	14	<b>3106 12 14</b>	22	56	0.025
14	16	<b>3106 12 16</b>	27	61	0.066
	14	<b>3106 14 00</b>	22	56	0.014
16	16	<b>3106 16 00</b>	27	60.5	0.041

## 3106 Equal and Unequal Tube-to-Tube Connector

Inch

Technical polymer, NBR

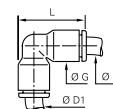


ØD	ØD1		G	L	Kg
1/4	1/4	<b>3106 56 00</b>	11	29.5	0.002
	3/8	<b>3106 60 00</b>	16	42	0.006
3/8	10	<b>3106 60 10</b>	12	50.5	0.028
	1/4	<b>3106 60 56</b>	16	41	0.016
1/2	1/2	<b>3106 62 00</b>	22	55	0.016

5/32"(4 mm) and 5/16"(8 mm) also available

## 3102 Equal and Unequal Elbow

Technical polymer, NBR

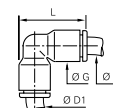


ØD	ØD1		G	L	Kg
4	4	<b>3102 04 00</b>	8.5	19	0.001
	6	<b>3102 04 06</b>	10.5	22.5	0.003
6	6	<b>3102 06 00</b>	10.5	22.5	0.002
	8	<b>3102 06 08</b>	13.5	29.5	0.008
8	8	<b>3102 08 00</b>	13.5	29.5	0.004
	10	<b>3102 08 10</b>	16	34.5	0.011
10	10	<b>3102 10 00</b>	16	34.5	0.006
	12	<b>3102 10 12</b>	19	40.5	0.019
12	12	<b>3102 12 00</b>	19	40.5	0.010
14	14	<b>3102 14 00</b>	22	46.5	0.015
16	16	<b>3102 16 00</b>	27	52	0.043

## 3102 Equal and Unequal Elbow

Inch

Technical polymer, NBR

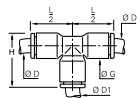


ØD	ØD1		G	L	Kg
1/4	1/4	<b>3102 56 00</b>	11	2.5	0.002
3/8	3/8	<b>3102 60 00</b>	16	34	0.006
1/2	1/2	<b>3102 62 00</b>	22	35	0.017

5/32"(4 mm) and 5/16"(8 mm) also available

## 3104 Equal and Unequal Tee

Technical polymer, NBR

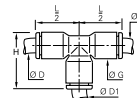


ØD	ØD1		G	H	L/2	Kg
3	3	<b>3104 03 00</b>	8.5	19	14.5	0.004
4	4	<b>3104 04 00</b>	8.5	19	14.5	0.002
	6	<b>3104 04 06</b>	10.5	22.5	17.5	0.007
6	4	<b>3104 06 04</b>	10.5	22.5	17.5	0.005
	6	<b>3104 06 00</b>	10.5	22.5	17.5	0.003
8	8	<b>3104 06 08</b>	13.5	29.5	23	0.015
	4	<b>3104 08 04</b>	13.5	29	17.5	0.013
8	6	<b>3104 08 06</b>	13.5	29.5	23	0.010
	8	<b>3104 08 00</b>	13.5	29.5	23	0.006
10	10	<b>3104 08 10</b>	16	34.5	26.5	0.020
	4	<b>3104 10 04</b>	16	33	26	0.023
10	8	<b>3104 10 08</b>	16	34.5	26.5	0.014
	10	<b>3104 10 00</b>	16	34.5	26.5	0.009
12	12	<b>3104 10 12</b>	19	40.5	31	0.033
	4	<b>3104 12 04</b>	19	39	31	0.040
12	10	<b>3104 12 10</b>	19	40.5	31	0.023
	12	<b>3104 12 00</b>	19	40.5	31	0.014
14	8	<b>3104 14 08</b>	22	46	35.5	0.054
	14	<b>3104 14 00</b>	22	46	35.5	0.022
16	12	<b>3104 16 12</b>	27	52.5	39	0.088
	16	<b>3104 16 00</b>	27	52	39	0.063

## 3104 Equal and Unequal Tee

Inch

Technical polymer, NBR

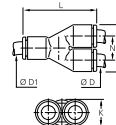


ØD	ØD1		G	H	L/2	Kg
5/32	1/4	<b>3104 04 56</b>	11	23.5	18	0.008
1/8	1/8	<b>3104 53 00</b>	8.4	19	14.5	0.003
	1/4	<b>3104 53 56</b>	11	23.5	18	0.011
3/16	3/16	<b>3104 55 00</b>	11	27.2	21.6	0.016
	5/32	<b>3104 56 04</b>	11	23.5	18.5	0.014
1/4	1/4	<b>3104 56 00</b>	11	23	24	0.003
	1/8	<b>3104 56 53</b>	11	23.5	18.5	0.007
3/8	3/8	<b>3104 56 60</b>	16	33.5	24.5	0.017
	1/4	<b>3104 60 56</b>	16	32.5	25.5	0.019
3/8	3/8	<b>3104 60 00</b>	16	34	26	0.009
	1/2	<b>3104 62 00</b>	22	46	35	0.026
1/2	1/4	<b>3104 62 56</b>	22.1	45.2	35.3	0.059
	3/8	<b>3104 62 60</b>	22	46	35	0.047

5/32"(4 mm) and 5/16"(8 mm) also available

## 3140 Equal and Unequal Single Y Piece

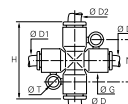
Technical polymer, NBR



ØD	ØD1		H	K	L	N	Kg
4	4	<b>3140 04 00</b>	17.5	8.5	28.5	9	0.002
	6	<b>3140 04 06</b>	17.5	10.5	33	9	0.002
6	6	<b>3140 06 00</b>	21.5	10.5	35	11	0.004
	8	<b>3140 06 08</b>	22.5	13.5	41	11.5	0.005
8	8	<b>3140 08 00</b>	28	13.5	45	14.5	0.006
	10	<b>3140 08 10</b>	28	16	47	14.5	0.008
10	10	<b>3140 10 00</b>	33	16	53	17	0.010
	12	<b>3140 10 12</b>	33	19	57	17	0.012
12	12	<b>3140 12 00</b>	39	19	57	20	0.017

## 3107 Equal and Unequal Cross

Technical polymer, NBR

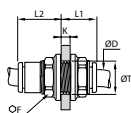


ØD	ØD1	ØD2		G	H	N	ØT	Kg
4	4	4	<b>3107 04 00</b>	11	36	20	4.2	0.014
6	4	6	<b>3107 04 06</b>	11	36	20	4.2	0.009
4	4	6	<b>3107 06 04</b>	11	36	20	4.2	0.011
6	6	6	<b>3107 06 00</b>	11	36	20	4.2	0.005
8	6	8	<b>3107 06 08</b>	11	46	22.5	4.2	0.018
6	6	8	<b>3107 08 06</b>	13.5	46	22.5	4.2	0.022
8	8	8	<b>3107 08 00</b>	13.5	46	22.5	4.2	0.009

# LF 3000® Push-In Fittings / Bulkhead Connector Fittings

## 3116 Equal Bulkhead Connector

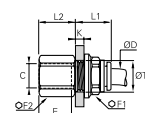
Technical polymer, NBR



ØD		F	K max	L1	L2	ØT min	Kg
4	<b>3116 04 00</b>	13	5.5	15	10	10.5	0.003
6	<b>3116 06 00</b>	15	8	19	11.5	12.5	0.004
8	<b>3116 08 00</b>	18	14.5	25	13.5	15.5	0.007
10	<b>3116 10 00</b>	22	14.5	27.5	15.5	18.5	0.011
12	<b>3116 12 00</b>	26	18.5	33	18	22.5	0.019
14	<b>3116 14 00</b>	29	20.5	37.5	20.5	25.5	0.028

## 3136 Bulkhead Connector, Female BSPP Thread

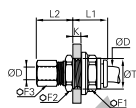
Nickel-plated brass, NBR



ØD	C		E	F1	F2	K max	L1	L2	ØT min	Kg
4	G1/8	<b>3136 04 10</b>	9.5	13	13	7	17	11.5	10.5	0.015
	G1/4	<b>3136 04 13</b>	13.5	13	16	7	17	15.5	10.5	0.021
6	G1/8	<b>3136 06 10</b>	9.5	15	15	8	19	10.5	12.5	0.021
	G1/4	<b>3136 06 13</b>	13.5	15	17	7	19	15.5	12.5	0.027
8	G3/8	<b>3136 06 17</b>	12	15	22	8	19	16	12.5	0.041
	G1/8	<b>3136 08 10</b>	9.5	18	17	8	20.5	10.5	15.5	0.029
10	G1/4	<b>3136 08 13</b>	13.5	18	17	8	20.5	14.5	15.5	0.029
	G3/8	<b>3136 10 17</b>	14	22	22	8.5	23	16	18.5	0.050
12	G3/8	<b>3136 12 17</b>	14	26	24	8.5	27	16	22.5	0.079
	G1/2	<b>3136 12 21</b>	19.5	26	27	8.5	27	21.5	22.5	0.098
16	G3/8	<b>3136 16 17</b>	12	29	29	10.5	30	15	27.5	0.125
	G1/2	<b>3136 16 21</b>	15	29	29	10.5	30	19.5	27.5	0.126

## 3146 Equal Mixed Bulkhead Connector

Nickel-plated brass, NBR

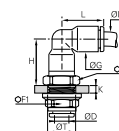


ØD		F1	F2	F3	K max	L1	L2	ØT min	Kg
4	<b>3146 04 00</b>	13	13	10	7	17.5	17.5	10.5	0.018
6	<b>3146 06 00</b>	15	17	13	8	19	18	12.5	0.028
8	<b>3146 08 00</b>	18	19	14	8	20.5	20.5	15.5	0.036
10	<b>3146 10 00</b>	22	22	19	8.5	23	24.5	18.5	0.062
12	<b>3146 12 00</b>	26	25	22	8.5	27	25	22.5	0.095
14	<b>3146 14 00</b>	29	29	24	10.5	27	27	25.5	0.124

Push-in connection with compression fitting

## 3139 Equal Bulkhead Elbow

Technical polymer, Nickel-plated brass, NBR



ØD		F	F1	G	H	K max	L	ØT min	Kg
4	<b>3139 04 00</b>	13	13	8.5	17	6.5	14.5	10.5	0.014
6	<b>3139 06 00</b>	17	15	10.5	19.5	7	17.5	12.5	0.021
8	<b>3139 08 00</b>	19	18	13.5	24	8	23	15.5	0.032
10	<b>3139 10 00</b>	22	22	16	28	8.5	26	18.5	0.048
12	<b>3139 12 00</b>	24	26	19	33	8.5	31	22.5	0.084
14	<b>3139 14 00</b>	27	29	25.5	37.5	10.5	36	25.5	0.117

The body swivels for positioning purposes.

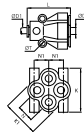
Boxes protect the contents and are designed to meet your requirements:

- part numbers and corresponding product pictures allow for immediate visual identification
- bar codes
- easy storage
- tamper-proof system of opening/closing
- recyclable material



## 3144 Equal and Unequal Multiple Y Piece

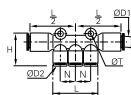
Technical polymer, NBR



ØD	ØD1		K	K1	L	N	N1	ØT	Kg
4	4	<b>3144 04 04</b>	25.5	21	30.5	10	8.5	3.7	0.015
	6	<b>3144 04 06</b>	25.5	21	30.5	10	8.5	3.7	0.013
6	6	<b>3144 06 06</b>	31.5	26.5	37.5	12	10	3.7	0.032
	8	<b>3144 06 08</b>	31.5	26.5	38	12	10	3.7	0.026

## 3304 Multiple Tee

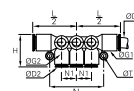
Technical polymer, NBR



ØD1	ØD2		H	L	L/2	N	ØT	Kg
6	4	<b>3304 06 04</b>	24.5	34	37	11.5	4.2	0.015
4	4	<b>3304 08 04</b>	24.5	34	37	11.5	4.2	0.012
8	6	<b>3304 08 06</b>	24.5	34	37	11.5	4.2	0.010
10	6	<b>3304 10 06</b>	36	44	40.5	14.5	4.2	0.019
	8	<b>3304 10 08</b>	36	44	40.5	15.5	4.2	0.015

## 3306 90° Multiple Elbow

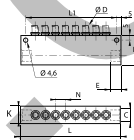
Technical polymer, NBR



ØD1	ØD2		G	G1	H	L/2	N	N1	ØT	Kg
6	4	<b>3306 06 04</b>	13.5	11	18.5	36	43	11.5	4.2	0.034
8	4	<b>3306 08 04</b>	13.5	11	18.5	36.5	43	11.5	4.2	0.025
	6	<b>3306 08 06</b>	13.5	11	18.5	36.5	43	11.5	4.2	0.022
10	6	<b>3306 10 06</b>	16	13.5	23	42	52	14.5	4.2	0.048
	8	<b>3306 10 08</b>	16	13.5	23.5	42	52	14.5	4.2	0.021

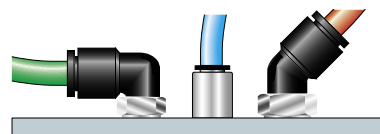
## 3310 In-Line Manifold

Treated aluminium, NBR



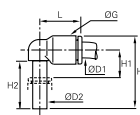
ØD	C		Number of Outlets	E	H	K	L	L1	N	Kg
4	G1/4	<b>3310 04 13</b>	8	10	33	20	114	104	11.5	0.164
6	G1/4	<b>3310 06 13</b>	8	10	33	20	114	104	12.5	0.160
8	G3/8	<b>3310 08 17</b>	6	12	33	20	114	104	15	0.149
10	G1/2	<b>3310 10 21</b>	6	16	48	25	145.5	135.5	17	0.329
12	G1/2	<b>3310 12 21</b>	4	16	45	25	158	148	20.5	0.354

Parker Legris offers the solution to enable many types of configuration options.



## 3182 Equal and Unequal Plug-In Elbow

Technical polymer, NBR

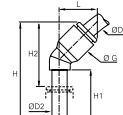


ØD1	ØD2		G	H	H1	H2	L	Kg
4	4	<b>3182 04 00</b>	8.5	23	6	15.5	14	0.005
4	6	<b>3182 04 06</b>	10.5	26.5	7	17	16	0.004
6	4	<b>3182 06 04</b>	10.5	24.5	7	15.5	16	0.001
6	6	<b>3182 06 00</b>	10.5	26.5	7	17	16	0.001
8	8	<b>3182 06 08</b>	13.5	33.5	8	21.5	23	0.007
8	8	<b>3182 08 00</b>	13.5	33.5	8	21.5	23	0.003
10	10	<b>3182 08 10</b>	16	39	10	24.5	26.5	0.010
10	10	<b>3182 10 00</b>	16	39	10	24.5	26.5	0.004
12	12	<b>3182 10 12</b>	19	44.5	10.5	27.5	31	0.016
12	12	<b>3182 12 00</b>	19	45.5	10.5	27.5	31	0.007

The references in diameter 4mm and 12mm are not grooved in standard version

## 3180 45° Plug-In Equal Elbow

Technical polymer, NBR

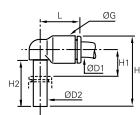


ØD1	ØD2		G	H	H1	H2	L	Kg
4	4	<b>3180 04 00</b>	9	33.5	19	21	13	0.001
6	6	<b>3180 06 00</b>	11	39	21	25	14.5	0.002
8	8	<b>3180 08 00</b>	13.5	44	21.5	25.5	19.5	0.003
10	10	<b>3180 10 00</b>	16	53	27	32.5	23	0.004
12	12	<b>3180 12 00</b>	19	58.5	27.5	34	26.5	0.007

## 3182 Equal Plug-In Elbow

Inch

Technical polymer, NBR

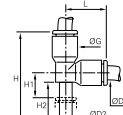


ØD1	ØD2		G	H	H1	H2	L	Kg
1/4	1/4	<b>3182 56 00</b>	11	27.5	7.5	18	18.5	0.002
3/8	3/8	<b>3182 60 00</b>	16	38.5	9	24	26	0.010

5/32"(4 mm) and 5/16"(8 mm) also available

## 3183 Equal and Unequal Plug-In Run Tee

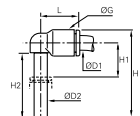
Technical polymer, NBR



ØD1	ØD2		G	H	H1	H2	L	Kg
4	4	<b>3183 04 00</b>	8.5	33	6	15.5	14.5	0.002
6	6	<b>3183 04 06</b>	10.5	38.5	7	17	17.5	0.006
6	6	<b>3183 06 00</b>	10.5	38.5	7	17	17	0.002
8	8	<b>3183 06 08</b>	13.5	48.5	8	21.5	23	0.014
8	8	<b>3183 08 00</b>	13.5	49	8	21.5	23	0.004
10	10	<b>3183 08 10</b>	16	56.5	10.5	24.5	26.5	0.018
10	10	<b>3183 10 00</b>	16	57	10.5	24.5	26.5	0.007
12	12	<b>3183 10 12</b>	19	65.5	10.5	27.5	31	0.034
12	12	<b>3183 12 00</b>	19	65.5	10.5	27.5	31	0.011

## 3184 Extended Equal and Unequal Plug-In Elbow

Technical polymer, NBR

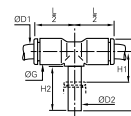


ØD1	ØD2		G	H	H1	H2	L	Kg
4	4	<b>3184 04 00</b>	8.5	32.5	15.5	25	14	0.004
6	6	<b>3184 04 06</b>	10.5	38.5	19	29	16	0.004
6	6	<b>3184 06 00</b>	10.5	38.5	19	29	16	0.002
8	8	<b>3184 06 08</b>	13.5	49	23.5	37	23	0.007
8	8	<b>3184 08 00</b>	13.5	49	23.5	37	23	0.003
10	10	<b>3184 08 10</b>	16	56	26.5	41.5	26.5	0.011
10	10	<b>3184 10 00</b>	16	56	26.5	41.5	26.5	0.005
12	12	<b>3184 10 12</b>	19	62.5	28	45.5	31	0.017
12	12	<b>3184 12 00</b>	19	62.5	28	45.5	31	0.008

The references in diameter 4mm and 12mm are not grooved in standard version

## 3188 Equal and Unequal Plug-In Branch Tee

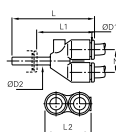
Technical polymer, NBR



ØD1	ØD2		G	H	H1	H2	L/2	Kg
4	4	<b>3188 04 00</b>	8.5	25	8	15.5	14.5	0.001
6	6	<b>3188 04 06</b>	10.5	28.5	9	17	16	0.007
6	6	<b>3188 06 00</b>	10.5	28.5	9	17	16	0.002
8	8	<b>3188 06 08</b>	13.5	36.5	11	21.5	22	0.014
8	8	<b>3188 08 00</b>	13.5	36.5	11	21.5	23	0.004
10	10	<b>3188 08 10</b>	16	41	12.5	24.5	26.5	0.018
10	10	<b>3188 10 00</b>	16	41	12.5	24.5	26.5	0.007
12	12	<b>3188 10 12</b>	19	46.5	12.5	27.5	31	0.030
12	12	<b>3188 12 00</b>	19	46.5	12.5	27.5	31	0.012

## 3142 Equal and Unequal Plug-In Single Y Piece

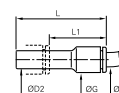
Technical polymer, NBR



ØD1	ØD2		L	L1	L2	N	Kg
4	4	<b>3142 04 00</b>	34	21.5	17.5	9	0.002
	6	<b>3142 04 06</b>	35.5	21.5	17.5	9	0.002
6	6	<b>3142 06 00</b>	39.5	25.5	21.5	11	0.004
	8	<b>3142 06 08</b>	44.5	26	22	11	0.006
8	8	<b>3142 08 00</b>	50.5	32	28	14.5	0.007
	10	<b>3142 08 10</b>	53.5	32	28	14.5	0.022
10	10	<b>3142 10 00</b>	57.5	36	33	17	0.010
	12	<b>3142 10 12</b>	60	35	33	17	0.035
12	12	<b>3142 12 00</b>	66	41	39	20	0.017

## 3166 Plug-In Reducer

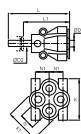
Technical polymer, NBR



ØD1	ØD2		G	L	L1	Kg
3	4	<b>3166 03 04</b>	8.5	37.5	23.5	0.002
	6	<b>3166 04 06</b>	8.5	37.5	23.5	0.001
4	8	<b>3166 04 08</b>	8.5	37.5	19	0.001
	10	<b>3166 04 10</b>	10.5	38	18	0.003
6	8	<b>3166 06 08</b>	10.5	37.5	20	0.001
	10	<b>3166 06 10</b>	10.5	38	17.5	0.002
8	12	<b>3166 08 12</b>	14.5	46	23	0.005
	14	<b>3166 08 14</b>	14.5	48	23	0.007
10	10	<b>3166 10 10</b>	13.5	49	28.5	0.003
	12	<b>3166 10 12</b>	13.5	49	24.5	0.004
12	14	<b>3166 12 14</b>	17	48	23	0.007
	12	<b>3166 12 12</b>	21.5	56.5	33.5	0.005
14	14	<b>3166 14 14</b>	21.5	58.5	33.5	0.005
	12	<b>3166 12 14</b>	23.5	58.5	33.5	0.007

## 3143 Multiple Plug-In Y Piece

Technical polymer, Nickel-plated brass, NBR

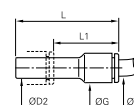


ØD1	ØD2		K	K1	L	L1	N	N1	Kg
4	6	<b>3143 04 06</b>	26	21.5	49.5	35.5	11	8.5	0.018
	8	<b>3143 04 08</b>	26	21.5	51	32	11	8.5	0.021
6	8	<b>3143 06 08</b>	31.5	26.5	57.5	39	12	10	0.035

## 3166 Plug-In Reducer

Inch

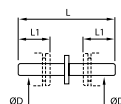
Technical polymer, NBR



ØD1	ØD2		G	L	L1	Kg
1/4	5/16	<b>3166 56 08</b>	11	41	23	0.002
	3/8	<b>3166 56 60</b>	11	41	21	0.002

## 3120 Stem Connector

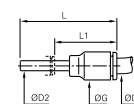
Technical polymer



ØD		L	L1	Kg
4	<b>3120 04 00</b>	34.5	12	0.001
6	<b>3120 06 00</b>	38.5	14	0.001
8	<b>3120 08 00</b>	41	18.5	0.001
10	<b>3120 10 00</b>	51.5	20.5	0.002
12	<b>3120 12 00</b>	60	24.5	0.004
14	<b>3120 14 00</b>	69.5	25.5	0.007

## 3168 Plug-In Increaser

Technical polymer, NBR



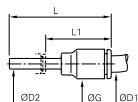
ØD1	ØD2		G	L	L1	Kg
6	4	<b>3168 06 04</b>	10.5	35	23	0.002
	6	<b>3168 08 06</b>	13.5	45	31.5	0.003
8	1/4	<b>3168 08 56</b>	16	40	25.5	0.009
	8	<b>3168 10 08</b>	16	42.5	21	0.004
12	10	<b>3168 12 10</b>	19	49	24.5	0.006

This model exists in nickel-plated brass; please use suffix 85. Example: 3120 06 00 85  
Only compatible with Parker Legris fittings. Drawing available upon request.

## 3168 Plug-In Increaser

Inch

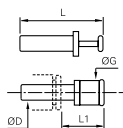
Technical polymer, NBR



ØD1	ØD2		G	L	L1	Kg
1/4	3/16	<b>3168 56 55</b>	20.5	41	25	0.002
	5/32	<b>3168 56 04</b>	11	41	29	0.002

## 3126 Blanking Plug

Technical polymer



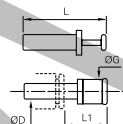
ØD		G	L	L1	Kg
3	<b>3126 03 00</b>	6	25	13.5	0.001
4	<b>3126 04 00</b>	4	30	15.5	0.001
6	<b>3126 06 00</b>	8	33	16.5	0.001
8	<b>3126 08 00</b>	10	35	17.5	0.001
10	<b>3126 10 00</b>	12	42	21	0.002
12	<b>3126 12 00</b>	14	45	22	0.003
14	<b>3126 14 00</b>	16	49	23.5	0.005
16	<b>3126 16 00*</b>	19	57	30	0.064

\*Nickel-plated brass

## 3126 Blanking Plug

Inch

Technical polymer

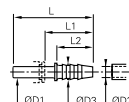


ØD		G	L	L1	Kg
1/4	<b>3126 56 00</b>	8	36.5	22	0.001
3/8	<b>3126 60 00</b>	12	42	22	0.002
1/2	<b>3126 62 00</b>	15	48.5	21.5	0.003

5/32"(4 mm) and 5/16"(8 mm) also available

## 3122 Plug-In Barb Connector

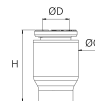
Technical polymer



ØD1	ØD2	ØD3		L	L1	L2	Kg
4	3.2	5	<b>3122 04 53</b>	37	25	17	0.004
	5	7	<b>3122 04 05</b>	37	25	17	0.001
6	5	7	<b>3122 06 05</b>	39	25	17	0.001
8	6.3	8.5	<b>3122 08 56</b>	39.5	21	17	0.001
	8	10	<b>3122 08 08</b>	44.5	26	22	0.001
10	6.3	8	<b>3122 10 56</b>	45	24.5	17	0.002
	8	10	<b>3122 10 08</b>	50	29.5	22	0.002
12	8	10	<b>3122 12 08</b>	50	26	22	0.002
	10	12	<b>3122 12 10</b>	48.5	25.5	22.5	0.002
14	12.5	14.5	<b>3122 12 62</b>	57	34	22.5	0.004
	12.5	14.5	<b>3122 14 62</b>	59.5	34.5	22.5	0.006

## 3151 End Cap

Technical polymer, NBR



ØD		G	H	Kg
4	<b>3151 04 00</b>	8.5	15	0.001
6	<b>3151 06 00</b>	10.5	17	0.001
8	<b>3151 08 00</b>	13.5	22	0.002
10	<b>3151 10 00</b>	16	22	0.003
12	<b>3151 12 00</b>	19	28	0.005
14	<b>3151 14 00</b>	22	31	0.009