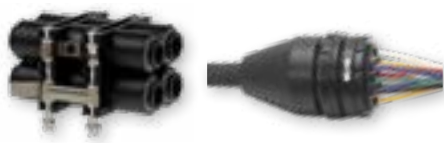


# LF 3000® Push-In Fittings / Modular Plug-In Connectors



These connectors secure and facilitate the connection of several circuits by mechanical coding.

Ø metric:  
4 to 8 mm

## Technical Characteristics

- **Compatible Fluids:** Compressed air  
Other fluids: please consult us
- **Working Pressure:** Vacuum to 10 bar
- **Working Temperature:** -20°C to +80°C

Reliable performance is dependent upon the type of fluid conveyed, component materials and tubing being used.

Use is guaranteed with a vacuum of 755 mm Hg (99% vacuum).

## Advantages

- 3 types of solutions: in-line, panel-mounted or DIN rail connector
- Minimized connection space
- Prevents incorrect assembly
- Customised multi-connectors upon request

## Component Materials

### Silicone-free

Multi-connectors:

- panel-mounted: zinc-plated steel, technical polymer
- in-line: aluminium, technical polymer
- DIN rail: technical polymer

Connections: LF 3000®

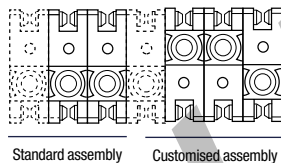


## Regulations

- ISO 14743
- PED
- RoHS
- REACH

## Installations Configurations

### Panel-Mounted



A box contains:

- 10 units
- 20 joining clips and 4 end pins
- 4 mounting brackets
- 4 coupling clips
- 1 dismantling tool

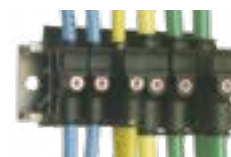
The module is constructed from a number of symmetrical components connected by joining clips. A coupling clip locks the module closed. A dismantling tool allows disconnection.

Maximum 5 modules recommended for the mating module; the fixed module is not limited.

### In-Line

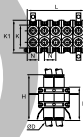


### DIN Rail Connector



## 3300 Modular Plug-In Connector

Technical polymer, NBR

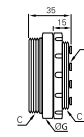


ØD		B	H	H1	K	K1	L	L1	L2	N	Kg
4	<b>3300 04 00</b>	21	40.5	29.5	32	20	55	22	6	11	0.079
6	<b>3300 06 00</b>	28	48	38.5	39	27.5	70	28	7.5	14	0.213
8	<b>3300 08 00</b>	28	50	39	39	27.5	70	28	7.5	14	0.125

Clearance hole for Ø3 mm screw

## 3320 Multi-Connector Male Screw Body

Technical polymer, NBR

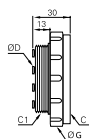


ØD	C	C1		Number of Outlets	G	Kg
	M46x1.5	M40x1.5	<b>3320 04 00 04</b>	4	50	0.069
4	M46x1.5	M40x1.5	<b>3320 04 00 07</b>	7	50	0.071
	M65x1.5	M58x1.5	<b>3320 04 00 12</b>	12	70	0.137
	M46x1.5	M40x1.5	<b>3320 06 00 04</b>	4	50	0.070
6	M46x1.5	M40x1.5	<b>3320 06 00 07</b>	7	50	0.073

The number of male body outlets must correspond to the same number of outlets on the female body.

## 3321 Multi-Connector Female Screw Body

Technical polymer, NBR

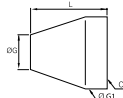


ØD	C	C1		Number of Outlets	G	Kg
4	M46x1.5	M40x1.5	<b>3321 04 00 04</b>	4	55	0.065
	M46x1.5	M40x1.5	<b>3321 04 00 07</b>	7	55	0.063
	M65x1.5	M58x1.5	<b>3321 04 00 12</b>	12	75	0.125
6	M46x1.5	M40x1.5	<b>3321 06 00 04</b>	4	55	0.065
	M46x1.5	M40x1.5	<b>3321 06 00 07</b>	7	55	0.064

The number of female body outlets must correspond to the same number of outlets on the male body.

## 3329 Multi-Connector Screw Cap

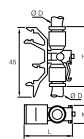
Technical polymer



C		Number of Outlets	G	G1	L	Kg
M40x1.5	<b>3329 00 02</b>	4-7	35	50	55	0.062
M58x1.5	<b>3329 00 03</b>	12	34	70	70	0.139

## 3379 DIN Rail Connector for 2 Tubes

Technical polymer, NBR

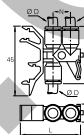


ØD		H	K	L	Kg
4	<b>3379 04 00</b>	34.5	11	39.5	0.010
6	<b>3379 06 00</b>	34.5	11	39.5	0.006
8	<b>3379 08 00</b>	46	13	44.5	0.008

Start pressure test point on the system

## 3381 DIN Rail Connector for 3 Tubes

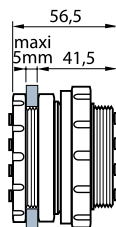
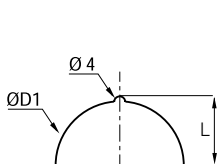
Technical polymer, NBR



ØD		H	K	L	N	Kg
4	<b>3381 04 00</b>	36.5	11	39.5	11.5	0.013
6	<b>3381 06 00</b>	36.5	11	39.5	11.5	0.007
8	<b>3381 08 00</b>	46	13	44.5	14.5	0.033

Start pressure test point on the system

### Overall Dimensions for Bulkhead Mounting



Number of Outlets	L	ØD1
2	17	32.5
4-7	21	40.5
12	30.3	58.5